



# Beaver Tales

Fall 2022

Beaver County Conservation District

## INSIDE THIS ISSUE:

<b>Fall Tire Collection</b>	<b>2</b>
<b>Grounds Improvements</b>	<b>3</b>
<b>Ag Corner</b>	<b>4</b>
<b>Environmental Education</b>	<b>5</b>
<b>PNDI for Permit Applicants</b>	<b>6-7</b>
<b>Integrated Mosquito Management Plan</b>	<b>7-8</b>
<b>Chapter 105 &amp; StreamStats</b>	<b>8-11</b>
<b>Upcoming Events</b>	<b>11</b>

### Mission Statement

The Beaver County Conservation District provides leadership in natural resource management through outreach, education, and technical assistance.

## Rain Barrel Workshop

On September 15, 2022 the district presented a rain barrel workshop. Workshop participants learned about the link between water quality and nonpoint source pollution and how their actions affect the watershed. Susan Boser, Penn State Extension Water Educator, presented a program focusing on watersheds, nonpoint source pollution and stormwater BMPs. Participants received a free rain barrel and kit and also learned how to put together their rain barrel. In 2020 BCCD created a YouTube video explaining how to put together and install a rain barrel. This video was made using the same components that are provided at the workshop. This is available to the public and was highlighted to participants for them to use once they go to install their rain barrel.



Participants were encouraged to follow “Homeowner’s Guide to Stormwater” to do their part in managing stormwater. It explains how to map your property, how to select practices based on preference, and then how to locate the practice in the appropriate place. This booklet can be found online, but also has an accompanying website: [stormwaterguide.org](http://stormwaterguide.org) which can make mapping and selecting projects easier. There are also companion videos to walk you through the process step-by-step.



Financial and other support for this project is provided by the Pennsylvania Association of Conservation Districts, Inc. through a grant from the Pennsylvania Department of Environmental Protection under Section 319 of the Clean Water Act, administered by the U.S. Environmental Protection Agency.

### Board of Directors

Mike Price, Chairman

Richard Smith, Vice Chairman

Jack Manning, County Commissioner

Shannon Ritmiller, Secretary/Treasurer

Robert Guidice, Farmer Director

Jeff Lyons, Farmer Director

Wayne Harley, Farmer Director

### Associate Directors

Dominic D'Egidio

Chip McCoy

Alex Schreiber

### District Staff

Jeff Pflug, District Manager

Hannah Ward, Watershed Specialist

Jen Linebaugh, Resource Conservationist

Heather Humbert, Environmental Educator

Richard Voytko, Agricultural Conservationist

Phoebe Prince, West Nile Virus Technician

Rachel Galloway, Resource Conservationist

### Contact Us

156 Cowpath Road

Aliquippa, PA 15001

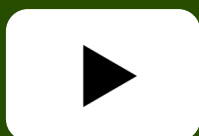
Phone (724) 378-1701

Office hours: 8:00 a.m. - 4:00 p.m.

Monday - Friday

Send inquiries to:

[beavercounty.conservationdistrict@bccdpa.us](mailto:beavercounty.conservationdistrict@bccdpa.us)

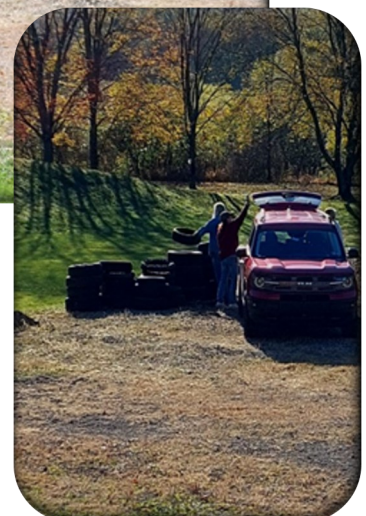
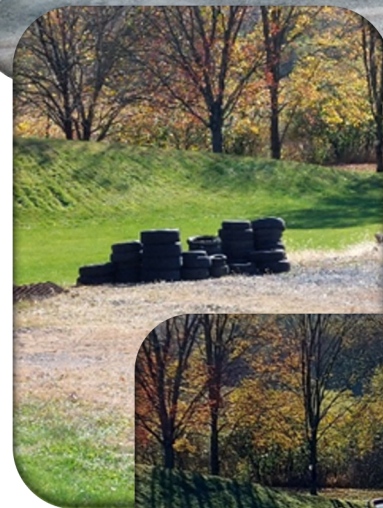


## Fall Tire Collection

The West Nile Virus Program held a smaller pre-registration tire event in October. We had 12 citizens pre-register on our district website. We want to thank everyone who participated! With our tire event in the spring and this event in October, we collected over 1,000 tires in 2022. Thank you to everyone for helping reduce mosquito breeding habitat in Beaver County and keeping Beaver County beautiful.

We will be offering another tire collection event in 2023, see you next year!

Any questions related to West Nile Virus or mosquito concerns, please contact us at the Beaver County Conservation District 724-378-1701 ext. 222





# Improvements at the Conservation District Grounds

If you have visited the conservation district environmental center grounds recently you have likely noticed many changes. Over the past two years a steady stream of improvements has made the district grounds a better place for people, pollinators, native ecosystems and wildlife!

To improve the grounds for the people who visit, many upgrades have been completed. Trails have been improved and a couple new trails have been added. New picnic tables and refurbished benches are here thanks to Eagle Scouts who have taken a leadership role in getting these projects done. The canoe launch parking area was refurbished. The classroom building and other areas have been painted. Brush was removed from the old farm pond bank so all could enjoy the pond.

Pollinators have benefited from changes in land management. The rain garden was refurbished and filled with native flowering plants. Mowing has been reduced or eliminated in some areas to enhance the flowering plants.

Native ecosystems have benefited from integrated pest management to reduce non-native invasive plant species. Multiflora rose, bush honeysuckle and Japanese Knotweed have been significantly reduced. This has opened growing space for native plants to recolonize areas formerly dominated by invasive plants.

Wildlife has benefited from the improved native ecosystem function. New bat boxes were installed thanks to an eagle scout. Bluebird boxes are now managed to eliminate non-native invasive house sparrows providing the bluebirds and tree swallows a place to nest.

More improvements are coming. These improvements include new kiosks to inform and educate visitors and new wood duck nesting boxes.

Come visit the grounds. Enjoy the birds and the trees. Stroll along the creek. Bring a friend, your horse, or your canoe. The conservation district grounds are a pleasure to visit any time of year!



# Ag Corner

## New Ag Financial Incentive Programs

Recent program innovations have enabled the Beaver County Conservation District to provide financial incentives directly to farmers. Farmers can use these financial incentives to develop plans and implement best management practices on their operations.

The Ag Plan Reimbursement Program helps farmers defray the cost of developing nutrient and manure management plans as well as ag erosion and sedimentation control plans. These plans meet state regulatory requirements for farms and support clean water and erosion control. Up to \$1,500 is available to each farm in need of a plan.

A second program: The PA Agricultural Conservation Assistance Program provides financial resources to support the design and installation of ag best management practices. This program can defray the costs of these practices. The goal is to prevent nutrient and sediment losses from farms to improve water quality and soil health. A few examples of ag best management practices which may be included are forested stream buffers, cover crops and animal heavy use areas.

Ultimately both programs help farmers improve their operation's bottom line as well as improve water quality and other environmental concerns. Contact the Beaver County Conservation District at 724-378-1701 to start improving your farm operation today!



### Important Fact!

All farms tilling greater than 5,000 sq. ft. must have an erosion and sedimentation plan (Conservation Plan). All farming operations that land apply manure need to develop and implement a manure management plan. Call the Conservation District to get detailed information and support developing your plans.

## Farm Equipment for Rent

### Great Plains 706NT No-till Drill

7ft planting width, 10 ft overall. Two seed boxes, large capacity. 4-Speed Gear Box. Adjustable depth control. 1-10 acres:\$12.00/acre. 10+ acres: \$10.00/acre. Minimum charge of \$50.00. No-till drill is rented in 3-day blocks.

### Stoltzfus Redhawk 40 Spreader

This is a 4 ton spreader (5 ton with installed extensions). \$75.00 for first 100 tons and \$50.00 for each additional 100 tons. The spreader is rented in 3-day blocks.





# Environmental Education Expands Post-Covid!

Environmental education through the Conservation District has increased significantly this year after two years of Covid affecting scheduling and participation in classes and events. Over the course of 2022, we led or joined 41 different education events with more than 2,800 attendees combined. This count does not include those whom we reached through social media, radio, or delegated events. To assist us in these outreach efforts, we have made some improvements to both our classroom and to our Mobile Education Center (MEC).

With the help of volunteers and summer staff, we gave our MEC a much-needed facelift. The green interior was painted bright white, new LED light strips were added, and we installed new roof vents. The lights and new paint make the inside of the trailer brighter, and the vents keep it cooler in the summer heat. The front inside wall also received a covering of Velcro loop cloth to give us more space to hang photos, information, and instructions for hands-on activities. After only a year of use, our MEC has been viewed by approximately 2,000 people.



In addition to improving our Mobile Education Center, we also made some changes to our non-mobile facilities. Early this fall, we had the classroom floor replaced. The old tiles were worn and cracked, and no amount of mopping could make the mud stains disappear. We now have a brand-new, textured floor which does not become slippery when wet – an important safety consideration when much of our education focuses on students exploring wetlands and stream habitat first-hand! The brown and tan coloration of this new floor also makes our classroom feel warmer and more inviting, encouraging students to take more time to explore our many displays.



In order to remove the old floor and install the new one, all of the tables, chairs, and displays had to be removed from the classroom. When the time came to move all of these things back inside, we decided to do some much-needed reorganization. While a few displays stayed exactly where they started, others moved locations, and some were expanded. We have a new display case full of items which teach us about Pennsylvania's geologic and paleontological history. Our touch table has been relocated so as to include an observation window for birdwatching. And the most exciting change to our displays is the addition of a full-body black bear mount, donated by local hunter, Keith Cunningham.

Although we are getting ready for winter now, we encourage you to come visit our updated classroom during our office hours! And we also hope to see you at some of next year's community events with our refurbished Mobile Education Center!

# I am applying for permit, my application form is requiring something called a PNDI to be submitted with my application. What is a PNDI?



“PNDI” stands for Pennsylvania Natural Diversity Index, and it is a required component of any Chapter 105 General Permit Application or Chapter 102 NPDES permit. The PNDI Environmental Review tool compares project activities and locations against species locations and recommends conservation measures and other actions needed to fulfill the requirements of an environmental permit.

Through the PNDI review process, each federal or state agency or commission (U.S. Fish and Wildlife Service, PA Department of Conservation and Natural Resources, PA Fish and Boat Commission and/or PA Game Commission) provides recommendations for the threatened or endangered species or feature under their jurisdiction to landowners, developers, and planners. As part of the permitting process, the PA DEP requires permit applicants to review their projects for potential impacts to threatened or endangered species using the Conservation Explorer. The PNDI Receipt contains important information regarding any threatened and endangered species, special concern species, and rare and significant ecological features for each project.

The PNDI Receipt will indicate that there are either “No Impacts,” or that there are “Potential Impacts,” “Avoidance Measures,” and/or “Conservation Measures” within the project area. The PNDI Receipt will determine whether the review is completed (because there are no potential impacts), or whether further actions are needed. If the PNDI Receipt indicates further action is needed, it will direct the applicant to the appropriate jurisdictional agency(ies) to resolve the Potential Impact(s). If the receipt identifies potential impacts, avoidance measures needed or conservation measures, the applicable jurisdictional agency within Pennsylvania will review the potential impacts of the proposed project further.

Once the Potential Impacts are resolved with the jurisdictional agency(ies), the agency(ies) will issue a “Clearance Letter.” The Clearance Letter serves to document that there are no longer any Potential Impacts, in the opinion of the applicable jurisdictional agency. Clearance Letters may contain measures to avoid, minimize or mitigate impacts to Threatened & Endangered Species or a species of special concern. These measures should be taken into consideration when planning or designing a project. The Clearance Letter must be submitted to BCCD as part of the permit review process.

For PNDI Receipt submission in conjunction with a PA DEP permit, a signed copy of the final receipt, along with any required documentation from jurisdictional agencies concerning resolution of potential impacts, be submitted with applications for permits requiring PNDI environmental review. Final PNDI Receipts are valid for two years from the date of the screening or two years from the issuance of a clearance letter or other resolution of a Potential Impact with a jurisdictional agency (whichever is later).

In order to conduct the review and receive the receipt, applicants can visit [www.naturalheritage.state.pa.us](http://www.naturalheritage.state.pa.us), select the Conservation Explorer tab at the top, and utilize the PNDI Environmental Review tool to generate a PNDI receipt (draft receipts are not acceptable). To access Pennsylvania Natural Diversity Inventory (PNDI) information for environmental review purposes, users will be required to register and login on the website. Applicants can then screen their project for potential impacts to PNDI species and obtain a PNDI Receipt with conservation measures, avoidance measures and directions on next steps that may impact or change the design of your project.

If applicants obtain a PNDI receipt on their own, a convenience charge of \$40 per project, payable by credit card, will be applied on the PNDI website.

As a further convenience and to assist local residents and permit applicants with implementation of PNDI screenings for projects within Beaver County, the Beaver County Conservation District (BCCD) can screen a proposed project area using the website. BCCD has implemented a \$60 admin fee per project screen (see BCCD Fee Schedule for Additional Service Fees), along with the \$40 regular fee needed to complete the search. Totaling \$100 per search completed by BCCD.

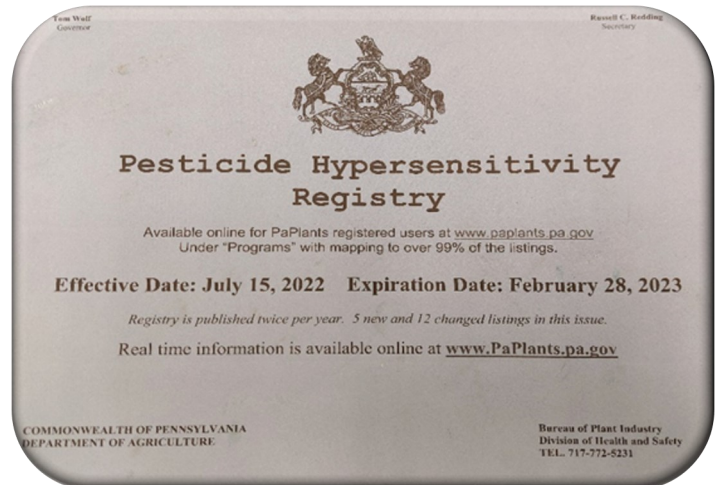
## Integrated Mosquito Management Plan

The Beaver County West Nile Program administers (IMM) an Integrated Mosquito Management Plan. The IMM includes surveillance, education, source reduction, and control.

The components of control include all stages of the mosquito life cycle from larval to adult. The Beaver County West Nile Program utilizes various forms of control methods from educating citizens to dump it! drain it! treat it! by removing standing water mosquito habitat such as dumping artificial containers. This includes upkeep on swimming pools, cleaning birdbaths and outside water bowls regularly, checking gutters and other areas that may hold water for longer periods of time, covering or treating rain barrels, and encourages citizens to treat areas that cannot be removed by using environmentally friendly products like Bti.

The program strives to minimize mosquito populations by removing mosquito habitat and using larvicides to prevent larvae from becoming adults. Adult mosquitoes that emerge are treated with adulticides. These pesticides are administered by ULV (Ultra Low Volume) and LV (Low Volume) using various modes such as backpack and truck mounted sprayers. When ULV events are scheduled, our program advertises the spray event in advance with local media and informs the local municipalities and police departments where the spray event will be conducted in that municipality. Our program also follows the protocol of the PA Dept of Agriculture Hypersensitivity Registry. Anyone registered on the Hypersensitivity Registry and also local beekeepers within the spray event boundaries are informed before the spray event.

The PA Dept of Agriculture maintains a registry of individuals who are hypersensitive to pesticides. The list is distributed to each county in the state of Pennsylvania and all commercial and public pesticide businesses. If an individual is listed on the hypersensitivity registry, the business is required to notify the individual of a pesticide application 12 to 72 hours prior to the spray event and not spray the area within 500 ft of the listed location.





## Continued...

Individuals interested in becoming listed on the Hypersensitivity Registry must register with the Pennsylvania Department of Agriculture. An application can be obtained from the PA Dept of Agriculture, local pesticide businesses, and at Penn State Extension.

Once the application is obtained and all required blocks are completed, the individual must have Part II filled out by a licensed Pennsylvania physician. The completed application can then be mailed to

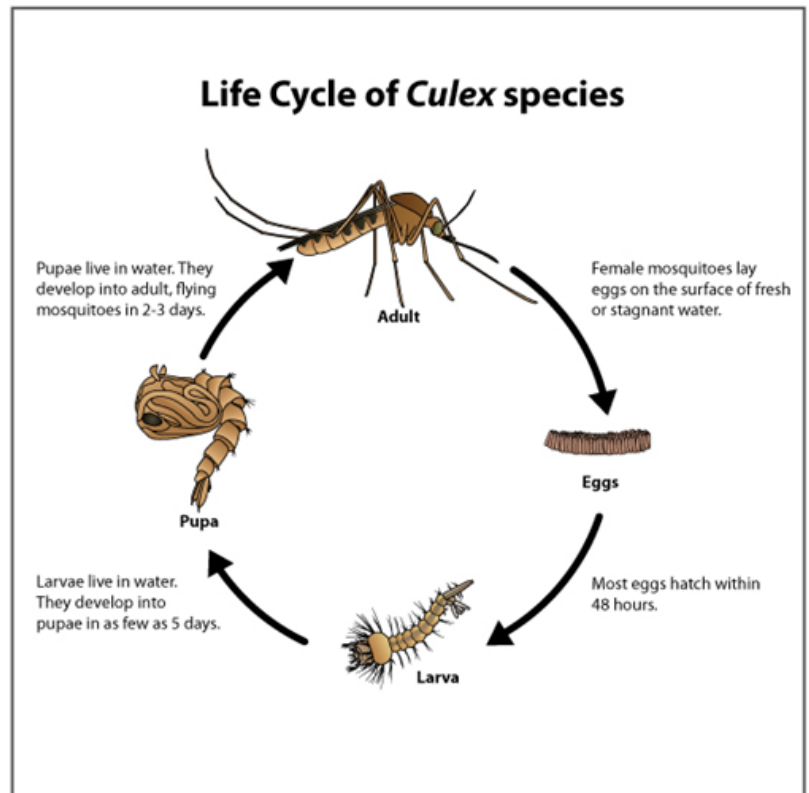
PA Department of Agriculture, Bureau of Plant Industry  
2301 N. Cameron St.  
Harrisburg, PA 17110-9408

Before the listing is published, it will be mailed to the individual for review of completeness and correctness. Once it is accepted, the information will be published on the list. The listing is not permanent and will expire. A renewal application will be sent to the individual in October requesting confirmation of renewal, if the renewal is not returned, the individual will be removed from the Hypersensitivity Registry.

For more information on the Pennsylvania Hypersensitivity Registry and the application process, please visit the following websites or call our office 724-378-1701 ext. 222

Penn State Extension  
[www.extension.psu.edu](http://www.extension.psu.edu)

Pennsylvania Department of Agriculture  
[www.agriculture.pa.gov](http://www.agriculture.pa.gov)



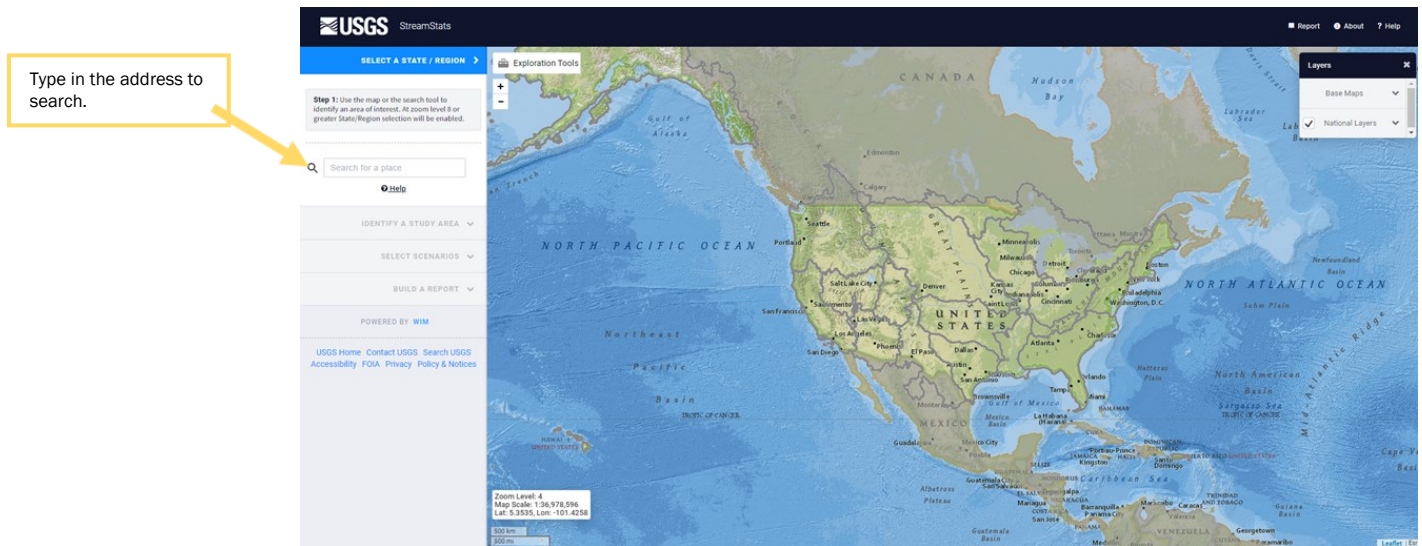
## Chapter 105: Drainage Area and USGS StreamStats

When applying for a Chapter 105 General Permit, drainage area matters. For example, to be eligible for a GP7-Minor Road Crossing, the drainage area for that point in the stream must be less than 1 square mile. On the other hand, if the drainage area is less than 100 acres, you may find that you could qualify for a waiver. Below is a step by step guide on how to use the StreamStats to determine the drainage area at the site of your proposed activity.

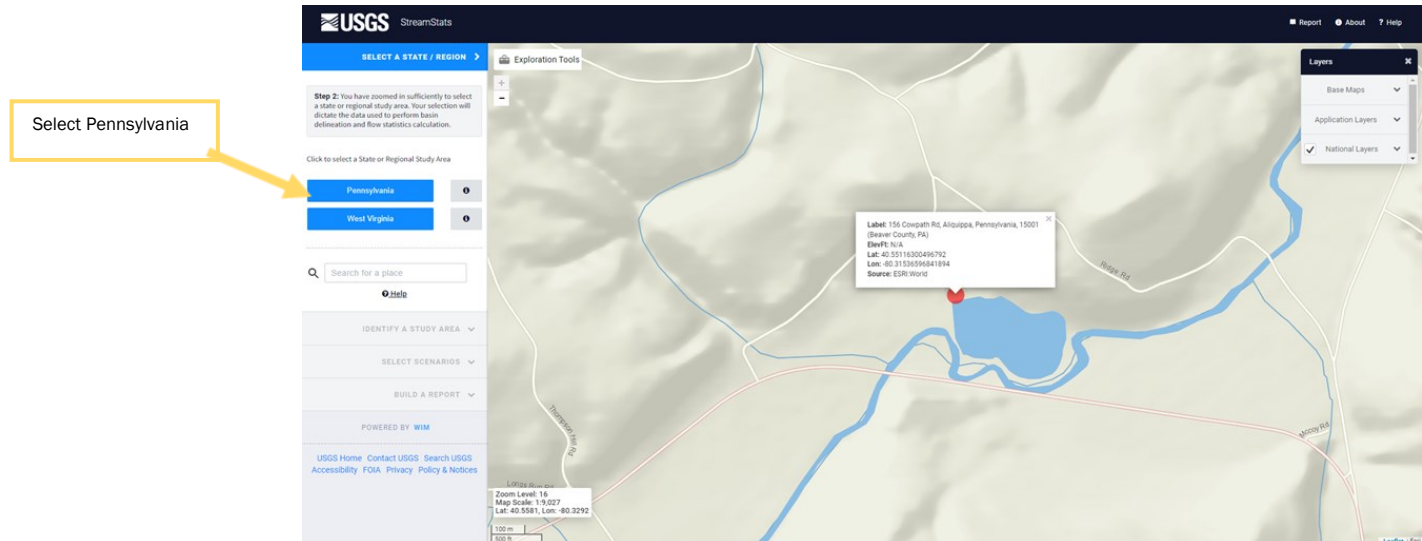
Continued on the following pages....



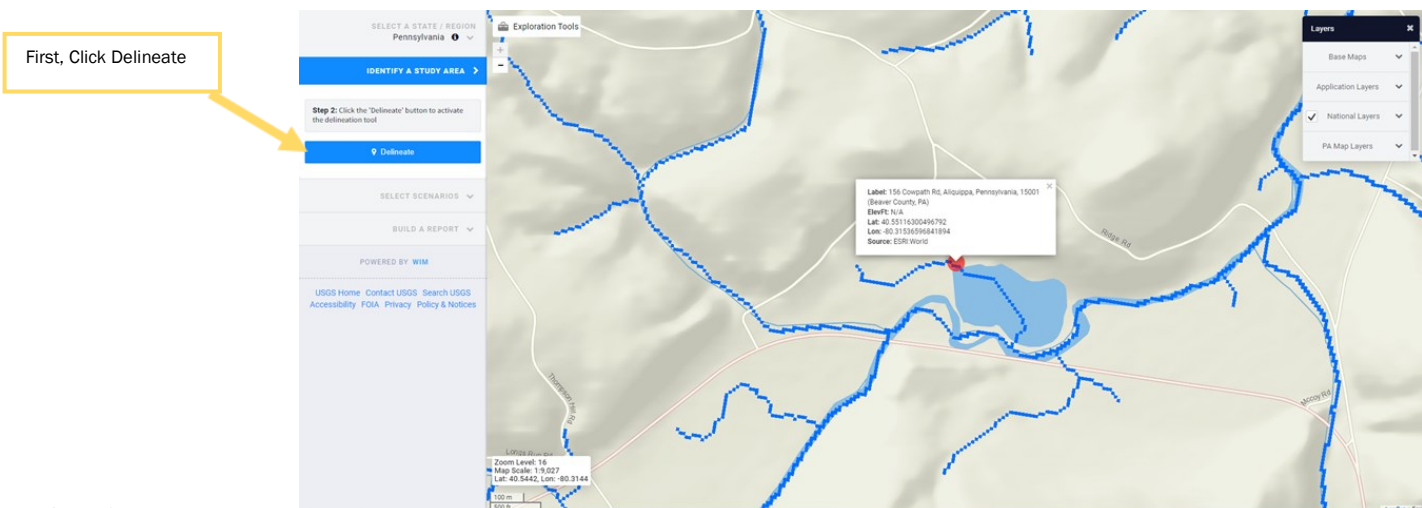
Follow this link: <https://streamstats.usgs.gov/ss/> The page should look like the picture below. In the “Search for a place” bar on the left side of the page, type the address where the work is being proposed. For this example, BCCD’s address will be used.



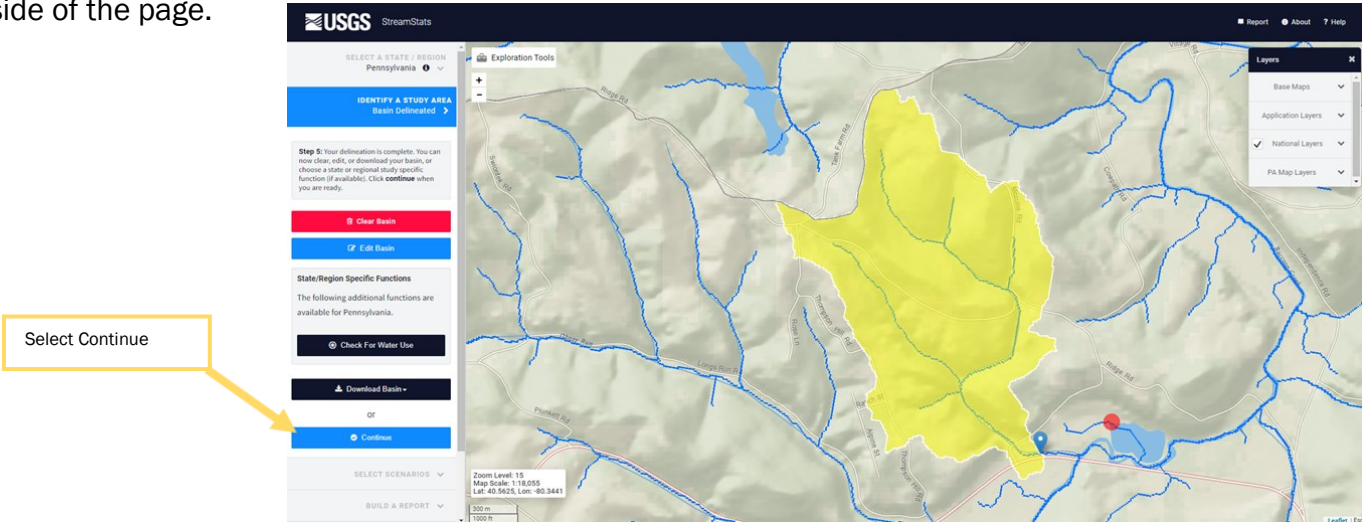
Once the address is located, follow the steps on the picture below:



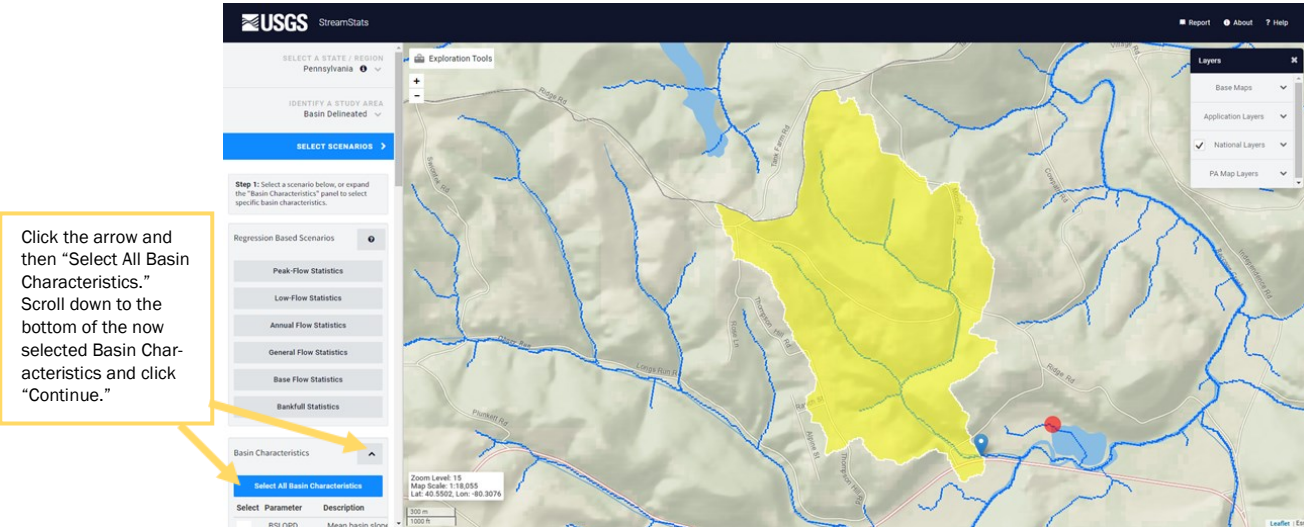
At this point, all the streams and tributaries should appear on the page. Click “Delineate” on the left side of the page. Then, click the point in the stream where the work will occur.



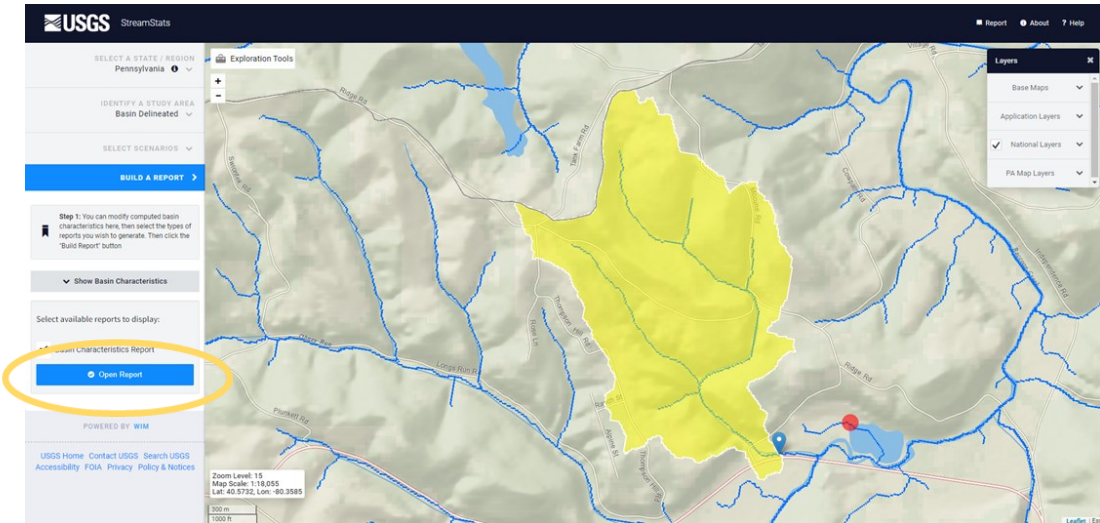
It may take a moment to load, but the image below should appear. The yellow area represents the drainage area to the point in the stream that you clicked in step 3. Next, click “Continue” in the bottom left side of the page.



Next, click the area next to “Basin Characteristics” at the bottom left side of the screen. This should expand the Basin Characteristics section, at which point you should click “Select All Basin Characteristics” and then scroll down to select “Continue”

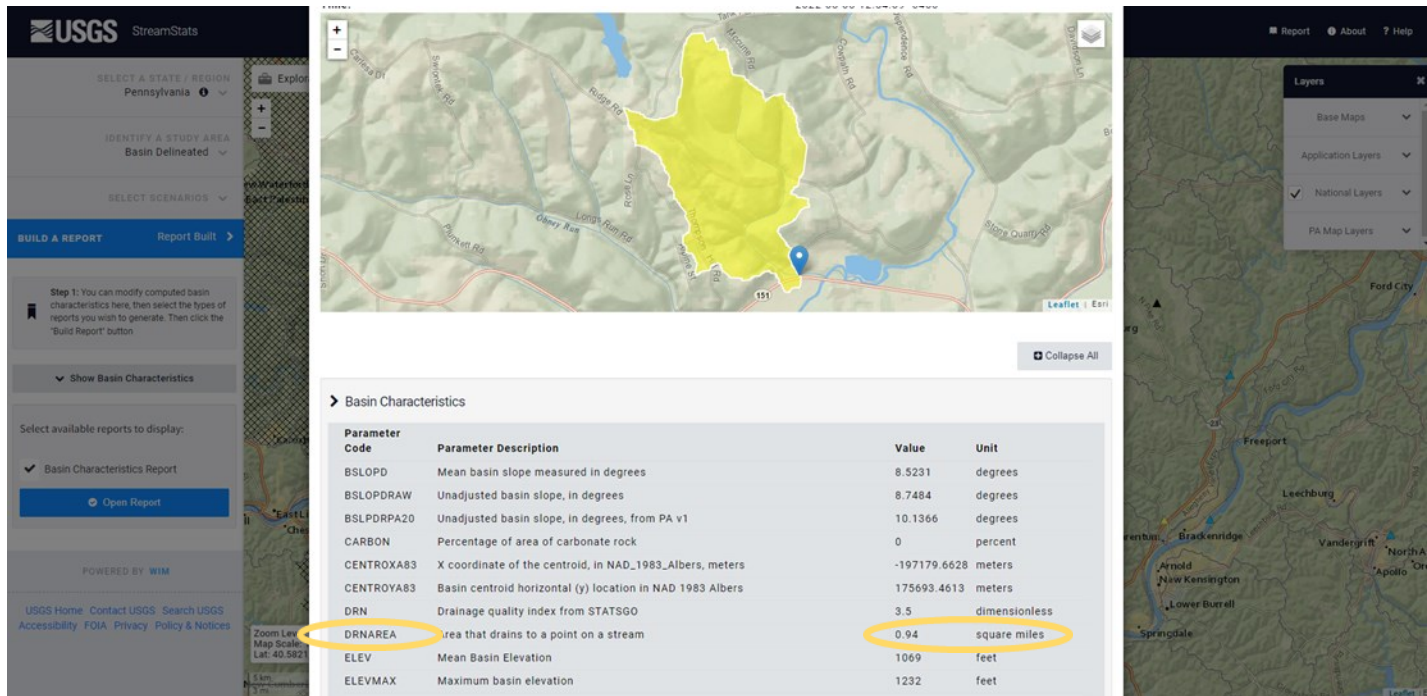


Click “Open Report” at the bottom left side of the screen.





A report should appear which includes all of the selected Basin Characteristics. The Parameter Code for the drainage area will be DRNAREA, and the area is represented in square miles. For the sake of this example, the drainage area at this location is 0.94 sq mi. This would qualify for a GP7, as the drainage area is less than 1 sq mi. This would NOT qualify for a waiver, as, once converted, you will find that the drainage area is significantly larger than 100 acres.



Learn about our natural world  
& SUPPORT CONSERVATION IN BEAVER COUNTY

#### Training course details:

April 12 - June 28, 2023

Classes weekly on Wednesday  
evenings from 6:00 - 8:30 p.m.

Saturday field sessions on April 22,  
May 13, June 3, and June 10

#### Coordinated by



Early bird rate deadline: Jan 1  
Final deadline: Feb 1

For more information, visit <https://bit.ly/PMNtraining>  
Contact Susie Moffett at [smoffett@pamasternaturalist.org](mailto:smoffett@pamasternaturalist.org) or 412-445-3715

## 2023 Southwest PA Soil Health Conference



Wednesday  
January 25, 2023  
9am - 3:30pm

Fred Rogers Center  
Saint Vincent College  
300 Fraser Purchase Rd  
Latrobe, PA 15650

Registration Fee: \$40 per person  
(\$45 after January 13th)