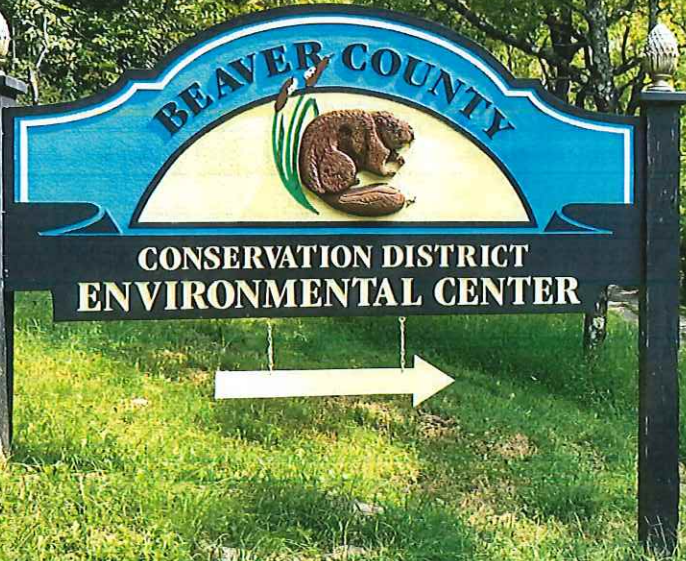


Celebrating 61 years of service to the residents and communities of Beaver County.

2022
Annual
Report

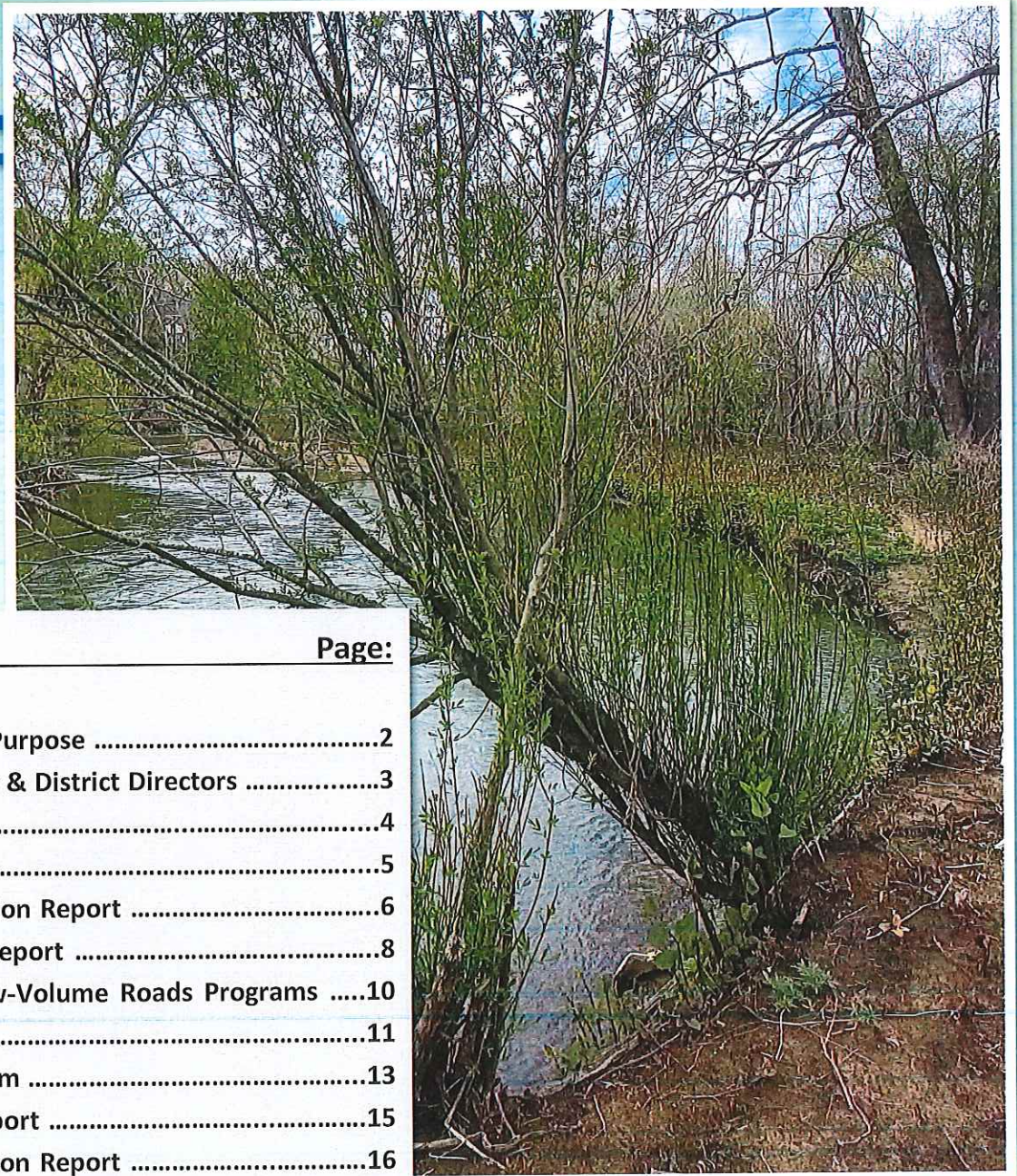


*Beaver
County*

Conservation District



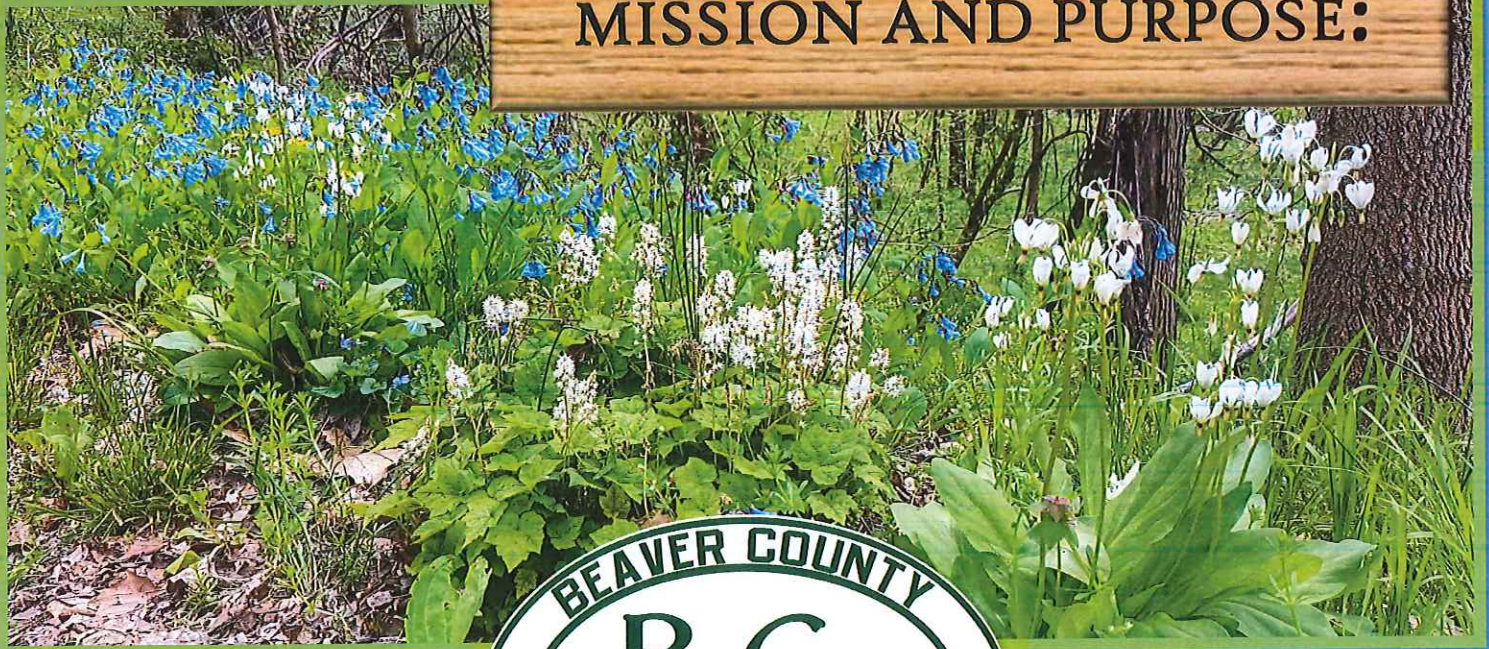
Table of Contents:



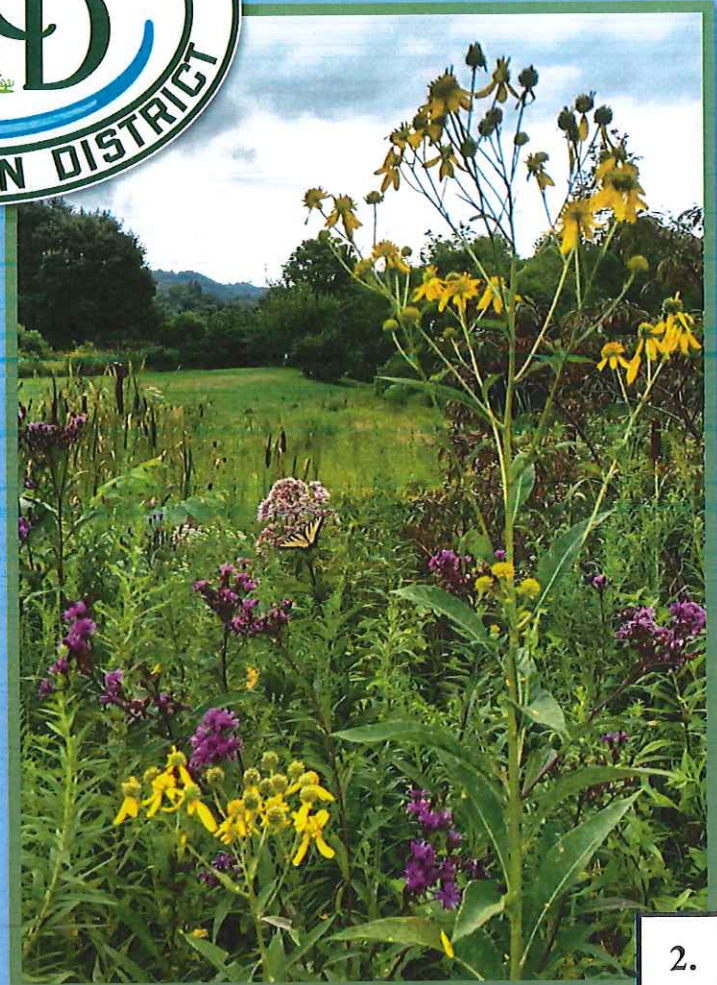
	Page:
Mission Statement & Purpose	2
County Commissioners & District Directors	3
District Staff	4
Partnership Agencies	5
Agricultural Conservation Report	6
Chapters 102 & 105 Report	8
Dirt & Gravel and Low-Volume Roads Programs	10
Watersheds Report	11
West Nile Virus Program	13
Spotted Lanternfly Report	15
Environmental Education Report	16
Envirothon Report	18
School Programs Report	19
New Staff Biography	20
Grounds Report	21
Tree Sale 2022	22
District Showcase	23
Editor's Note	29
Profit & Loss Statement	Appendix

The Beaver County Conservation District provides leadership in natural resource management through outreach, education, and technical assistance.

Beaver County Conservation District
MISSION AND PURPOSE:



The Beaver County Conservation District was established by resolution #213 on August 3, 1961 for the conservation of the soil and soil resources in Beaver County and for the control and prevention of soil erosion. Its mission is to preserve natural resources and to promote and protect the health, safety and general welfare of the people of Beaver County and to provide technical services to improve resource management for the benefit of both farmers and urban residents.



COMMISSIONERS AND DIRECTORS

Beaver County Board of Commissioners

Dan Camp, *Chairman*

Jack Manning, *Commissioner*

Tony Amadio, *Commissioner*

Beaver County Conservation District Board of Directors

Michael W. Price, *Chairman*

Richard Smith, *Vice Chairman*

Jack Manning, *Commissioner Director*

Shannon Ritmiller, *Secretary/Treasurer*

Robert Guidice, *Director*

Jeff Lyons, *Director*

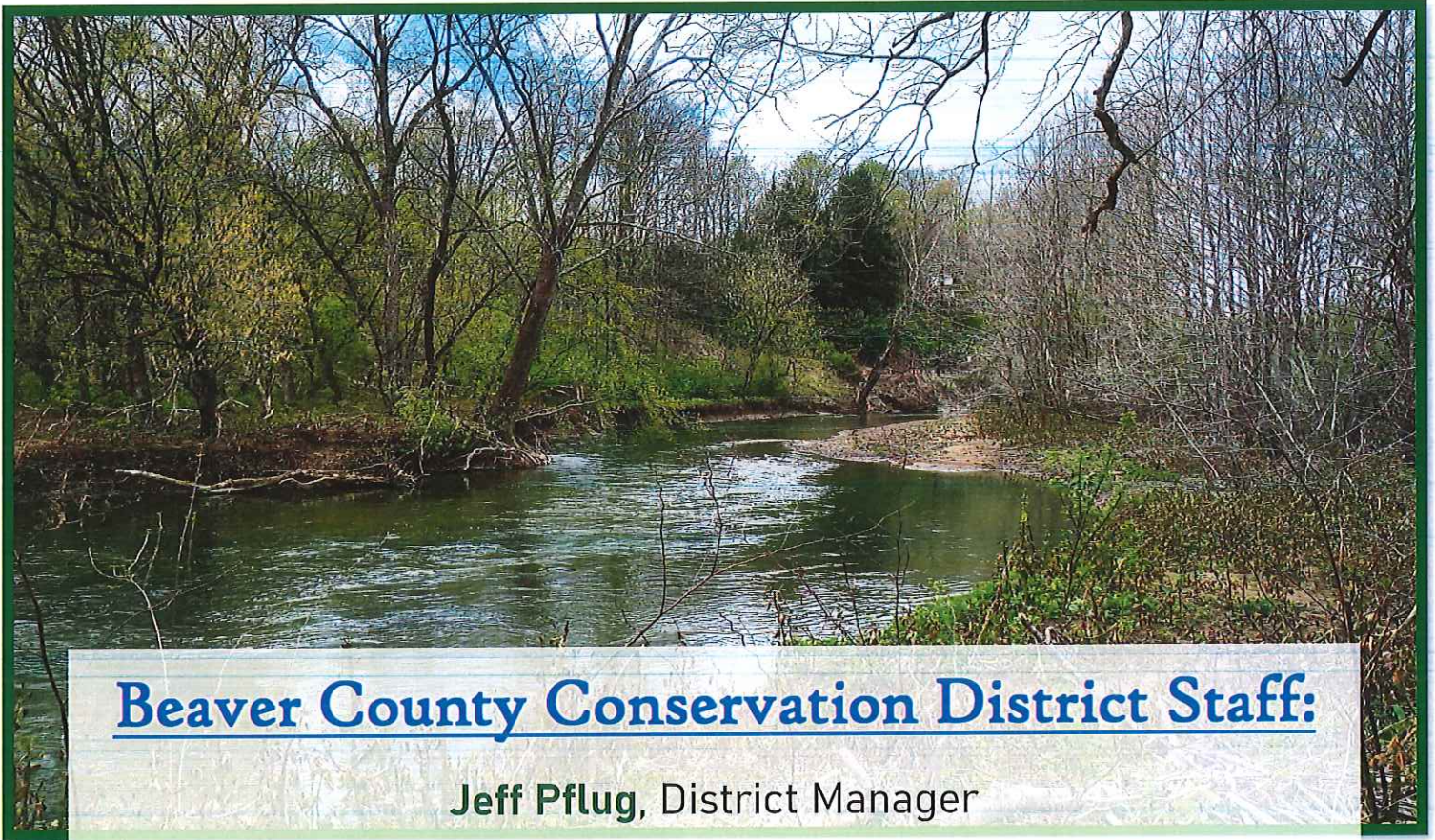
Wayne Harley, *Director*

Conservation District Associate Directors

Dominic D'Egidio

Chip McCoy

Alex Schreiber



Beaver County Conservation District Staff:

Jeff Pflug, District Manager

Phoebe Prince, West Nile Virus Technician

Melinda Muehlbronner, Resource Conservationist

Hannah Ward, Watershed Specialist, DGLVR, Financial Administrator

Richard Voytko, Agricultural Conservationist

Rachel Galloway, Resource Conservationist

Jen Linebaugh, Resource Conservationist

Heather Humbert, Environmental Educator



PARTNERSHIP AGENCIES:

**United States Department of Agriculture
Natural Resource Conservation Service**

Andrew Gaver, Soil Conservationist
625 Evans City Road, Suite 102
Butler, PA 16001
Phone: (724) 482-4800 Ext. 108

**Pennsylvania State University
Cooperative Extension**

1000 3rd Street, Suite #3
Beaver, PA 15009-2026
Phone: (724) 774-3003

**Beaver County Board of Commissioners
Beaver County Courthouse**

810 Third Street
Beaver, PA 15009
Phone: (724) 728-5700

**Department of Environmental Protection
Southwest Regional Office**

400 Waterfront Drive
Pittsburgh, PA 15222-4745
Phone: (412) 442-4000

Pennsylvania Game Commission

Matthew Kramer/Mike Yeck, Game Wardens
P.O. Box 141
Beaver, PA 15009
Phone: (724) 238-9523

Pennsylvania State Conservation Commission

Karl G. Brown, Executive Director
2301 North Cameron Street
Harrisburg, PA 17110-9408
Phone: (717) 787-8821

**United States Department of Agriculture
Farm Service Agency**

Ed Huston III, Acting County Executive Director
625 Evans City Road, Suite 103
Butler, PA 16001
Phone: (724) 482-4800 Ext. 2

**Commonwealth of Pennsylvania
Department of Transportation**

Cheryl Moon-Sirianni, District Executive
45 Thoms Run Road
Bridgeville, PA 15017
Phone: (412) 429-4863

Department of Conservation and Natural Resources

Bureau of Forestry
District #8 Clear Creek
158 South Second Avenue
Clarion, PA 16214-2404
Phone: (814) 226-1901

Pennsylvania Department of Agriculture

226 Donohoe Road
Greensburg, PA 15601
Phone: (724) 832-1073

Pennsylvania Fish and Boat Commission

Jeremiah Allen, WCO
236 Lake Road
Somerset, PA 15501
Phone: (814) 445-8974

**Pennsylvania Association of
Conservation Districts**

Brenda Shambaugh, Executive Director
5925 Stevenson Ave, Suite A
Harrisburg, PA 17112
Phone: (717) 238-7223 Ext. 103

The Beaver County Conservation District works together with the Natural Resource Conservation Service, Pennsylvania State University Extension Office, Pennsylvania Fish & Boat Commission, Pennsylvania Game Commission, Department of Environmental Protection, Department of Conservation of Natural Resources, Pennsylvania Department of Transportation, Municipalities, Schools and many Beaver County Agencies/Groups concerning conservation and land use planning, farmland preservation, crop/field days, wildlife, aquatics, Envirothons, tree sales, plantings, county programming and soil erosion.

Agricultural Conservation Report

2022 Annual Report

Richard Voytko, *Agricultural Conservationist*

The Beaver County Conservation District provides leadership in natural resource management through outreach, education, and technical assistance. The District assists farm operations achieve farm conservation goals.

The District's work is accomplished through many efforts. Two agricultural workshops were hosted by the District with 20 participants. A PACD mini-grant of \$1,356 supported these events. The two workshops focused on ag environmental regulations and manure management plan writing. Participants had an opportunity to receive pesticide continuing education credits. A cover crop field day was held at the Conservation District Environmental Center and surrounding farms. Farmers were provided real world examples of cover crops. NRCS and PSU Extension provided support for this field day which was also supported with a \$250 grant from the Keystone Chapter of the Soil and Water Conservation Society. A meeting for plan writing was also held in association with New Sewickley Township. The District cohosted an evening pasture walk at a grazing operation in August. The District also co-sponsored a field day for the Eastern Alliance for Production Katahdins in October.

The District provided ag outreach to the community at a variety of events, including the Farm/City Banquet, Big Knob Fair, and Hookstown Fair. A spot aired on local radio highlighting the District's ag programs.

Many one-on-one farm visits were held to help farm operators tackle conservation issues. Soil testing to optimize soil fertility and yields is always a key issue tackled on farm visits. Other issues of routine concern to farm operators include forage crop management, manure management, erosion and sediment control, cover crops, grazing, and forestry. The District takes on any concern from agronomy to zoology. If District personnel do not have the expertise, we engage professionals from partner agencies to support farmers. The District routinely interacts with NRCS, Penn State Extension, DCNR Bureau of Forestry, and other organizations to support farm operators.

The District supports needed ag planning by assisting farmers in writing manure management plans and agricultural erosion and sedimentation plans. The District reviews and approves nutrient management plans for farm operations in need of higher level plans. The District also assists farm operators applying for the REAP tax program.

The District rented its no-till drill to farmers planting forage and cover crops. Eleven drill rentals resulted in over 100 acres of no-till planted crops. The District created a drill use and calibration video which is on our YouTube channel. The District's Stoltzfus Redhawk lime spreader is rented to farmers to promote optimum fertility on crop, hay, and pasture fields. Over 180 tons of lime were spread to improve fertility on Beaver County farms.



Above: The District's no-till drill and lime spreader were on display at the Hookstown and Big Knob Fairs.

Below: During our Cover Crop field day, farmers got to see real world examples at local farms.



Chapter 102 and Chapter 105 Programs

2022 was a busy year for the Chapter 102 and Chapter 105 programs at the Beaver County Conservation District. To start the year off, the program expanded with the addition of Rachel Galloway onto the team to serve as Resource Conservationist along Jen Linebaugh and Melinda Muehlbronner. Both the Chapter 102 and Chapter 105 programs saw an increase in permit applications. Over the course of 2022, the 102/105 staff continued to conduct technical assistance meetings with applicants, advertise the programs through outreach, and attend continuing education. Jen and Rachel had the opportunity to connect and learn with other county conservation district's and state official by attending the 2022 Chapter 102 Technical Training held in Harrisburg.



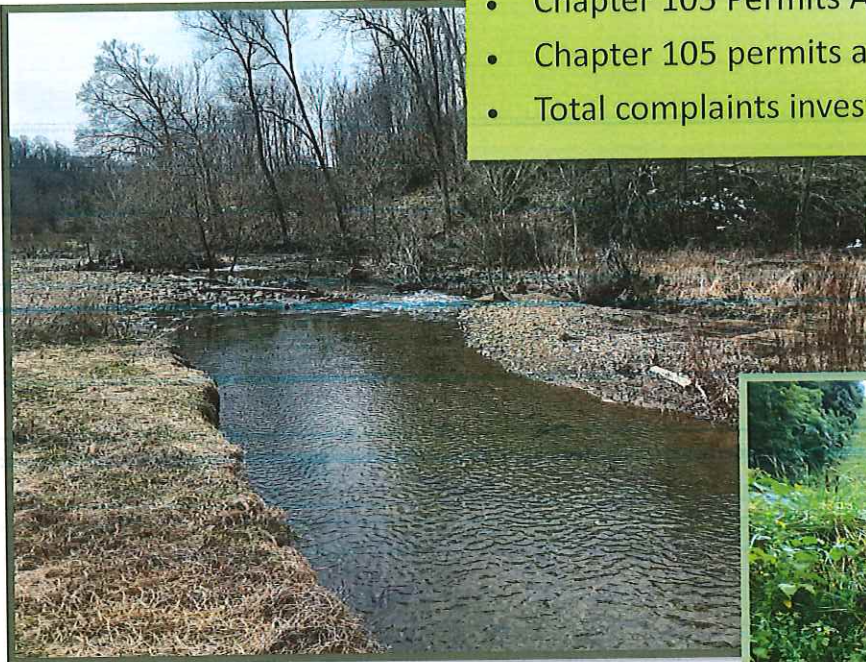
Chapter 102 Accomplishments:

- Chapter 102 Permits Applied For: approx. 28
- Chapter 102 Permits Issued: approx. 30
- E&S Plans submitted for review: approx. 34
- Total Complaints investigated, including follow ups: approx. 37



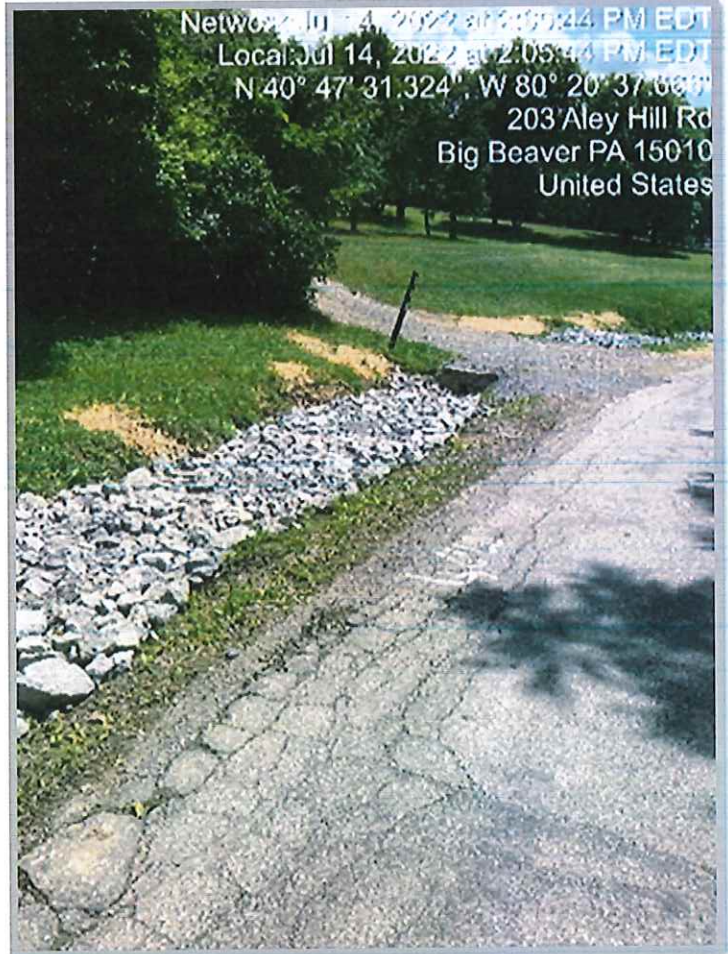
Chapter 105 Accomplishments:

- Chapter 105 Permits Applied for: approx. 53
- Chapter 105 permits acknowledged: approx. 48
- Total complaints investigated, including follow ups: approx. 26



Dirt, Gravel, and Low-Volume Roads

Right: *Aley Hill Road*
Big Beaver Borough



Left: *Plumb Street*
Darlington Borough

Throughout the year BCCD works with municipalities to fund road projects that will eliminate stream pollution caused by runoff and sediment from the State's comprehensive network of unpaved and low volume public roads.

In 2022, BCCD completed two low volume road projects. Big Beaver Borough completed a \$63,854.83 project and Darlington Borough completed a \$37,510.21 project. Both projects improved stormwater runoff that was occurring on the low volume roads.

Dirt and Gravel Roads in Progress include Johnan Road in Hanover Township and multiple roads in Glasgow Borough.

Watershed Improvement Projects and Outreach:

Raccoon Creek Streambank Remediation Phase 2:

Sedimentation is the leading cause of impairment to streams in Pennsylvania and Raccoon Creek is no exception. This project addressed erosion issues at the site using natural stream channel design and habitat friendly in-stream structures. The project consisted of a series of five rock and log j-hook vanes. The rock and log j-hook vanes are protecting the streambank and phase 1 structures. No further erosion is occurring at the project site. The structures are providing in stream habitat for aquatic organism. The length of streambank being protected is approximately 410 feet and the sediment load reductions to Raccoon Creek is approximately 60 tons per year.

The total project costs including grant funds and matching funds was \$31,955.04.



Stormwater Help for Homeowners:

BCCD presented a Stormwater Help for Homeowners Workshop where 41 participants learned about the link between water quality and nonpoint sources and how their actions affect the watershed. Susan Boser, Penn State Extension Water Educator, presented a program focusing on watersheds, nonpoint source pollution and stormwater BMPs. Hannah Ward presented a program on how to build your rain barrel and explained the components of the kits. Participants received a rain barrel, rain barrel kit, and information flyers. Total project costs including grant funds and matching funds was \$2,141.49.

Financial and other support for this project was provided by the Pennsylvania Association of Conservation Districts, Inc. through a grant from the Pennsylvania Department of Environmental Protection under Section 319 of the Clean Water Act, administered by the U.S. Environmental Protection Agency.



West Nile Virus Program 2022

Phoebe Prince, West Nile Virus Technician

2022 was a busy year for the West Nile Program. Larval surveillance began in April and adult mosquito surveillance began in May. We collected high numbers of adult mosquitoes with trapping throughout the season, but West Nile Virus positive mosquitoes were only reported later in the season.

There were 13 West Nile Virus positive mosquito pools in 2022.

We conducted 2 tire collections in 2022. A two-day event in April and a smaller pre-registration event in October which combined collected over 1,000 tires.

This year we tried a new approach by advertising with our local county radio station, WBVP. They invited us to participate in an interview about the tire collection and discuss the need to reduce mosquito habitat by removing old tires from neighborhoods and personal properties. We also discussed mosquito species, characteristics, habitat, and West Nile Virus. It was a great experience and outreach opportunity, and we had a positive response from listeners within the county.

At our spring tire event, we had the assistance of local Girl Scout troop #46769. They helped with the collection and helped with offering refreshments to the participants.

Throughout the year, we traveled to different events with our environmental educator, Heather Humbert and the BCCD MEC (Mobile Education Center). The MEC was open to visitors to view the traps used for surveillance, learn about life cycles of mosquitoes and ticks, and pick up informational brochures, mosquito dunks, and mosquito activity books for the kids.



This year, we created bookmarks about mosquitoes and ticks which were distributed at educational events throughout the county.

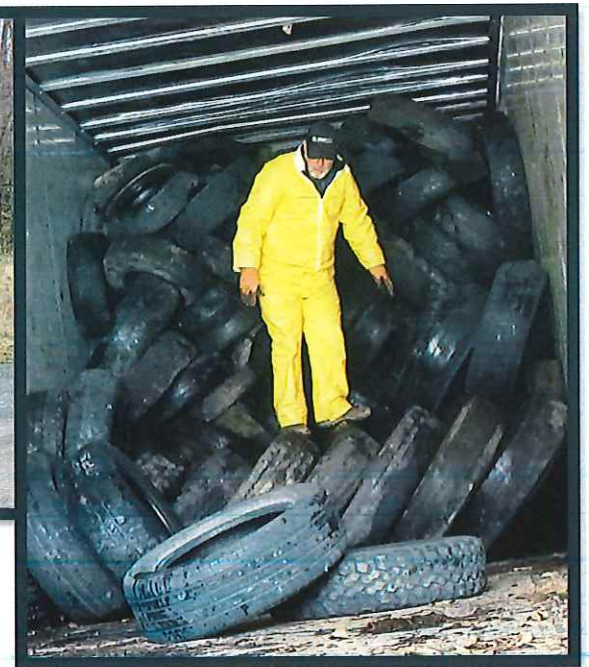


2022 Mosquito Trapping Season

- 350 gravid traps set with over 32,347 adult mosquitoes collected
- 197 larval collections with over 1,170 larvae and pupae collected
- 43 BG Sentinel traps set with 1,776 mosquitoes collected
- 11 adult control events conducted via backpack
- 232 larval control events throughout the county during the season



Mosquito habitat reduction efforts included two tire collection events which resulted in over 1,000 tires being recycled.

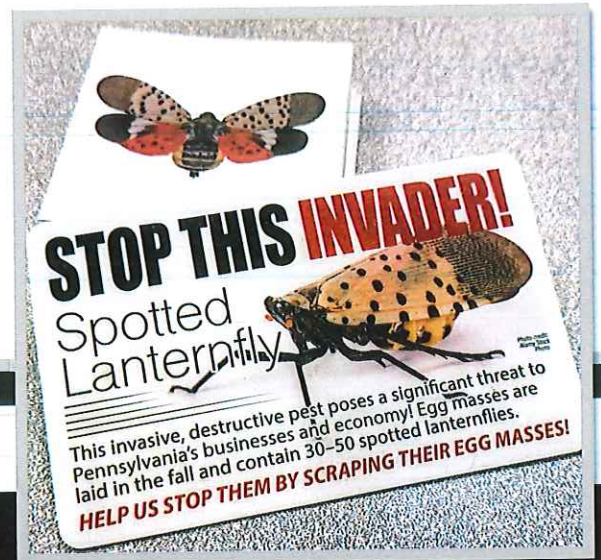


2022 Tick Surveillance Season

- 41 tick drags conducted
- 42 adult ticks collected
- 491 immature ticks collected
- 5 tick samples returned positive
 - 4 *Borrelia burgdorferi* (Lyme Disease)
 - 1 *Anaplasma phagocytophilum* (Anaplasmosis)

Spotted Lanternfly in Beaver County: 2022 Report

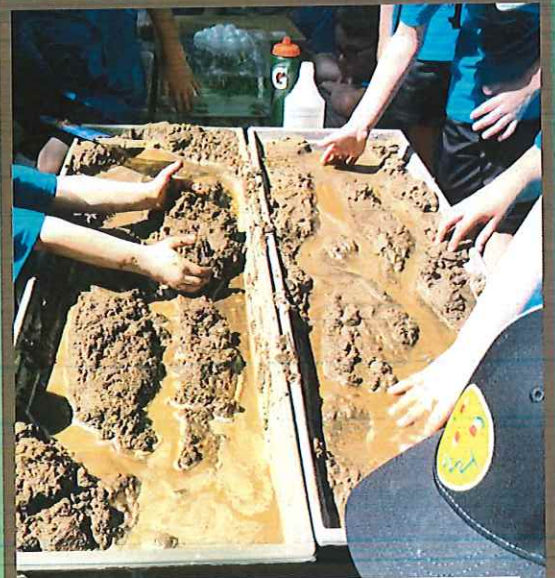
The Spotted Lanternfly expanded its hold in Beaver County in 2022. This non-native, invasive insect is found mainly along the Ohio river in our county but has now reached many other areas. The Spotted Lanternfly is expected to invade the entire county over the next few years. The Conservation District worked with other agencies to thwart the advance of this pest. The District provided 80 spotted lanternfly traps to landowners. Educational material was provided at public events. Educational signs are posted at county parks and at the Conservation District Environmental Center. A spotted lanternfly video was developed by the Conservation District and placed on our YouTube channel.



A screenshot of a YouTube video player. The address bar shows the URL "https://www.youtube.com/watch?v=Yzm3jgHymwo&t=3s". The YouTube logo and a search bar are visible at the top. The video player shows a title card with the text "INVASION OF THE SPOTTED LANTERNFLY" in red, underlined letters, and "What is It and What Does it Do?" in black. Below the title card is a circular logo for the Beaver County Conservation District (BCCD). The video player controls at the bottom show a play button, a progress bar at 0:00 / 6:47, and various icons for volume, chapters, and full screen. Below the video player, the channel name "Beaver County Conservation District" is displayed with 23 subscribers, along with buttons for "Analytics" and "Edit video". At the bottom right, there are icons for "Like" (3), "Share", "Download", "Clip", and "Save".

2022 Environmental Education Report

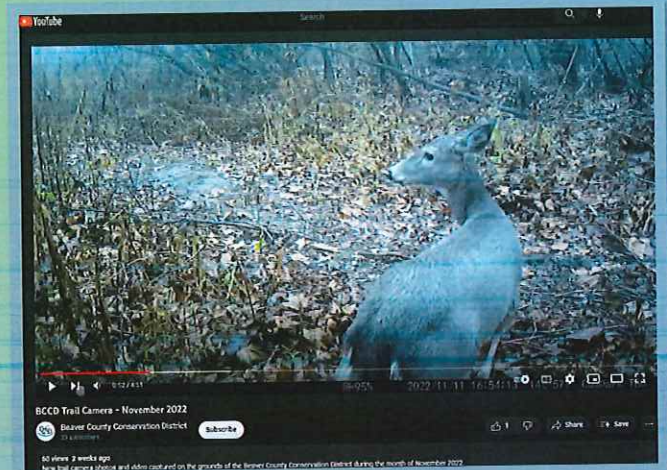
The Beaver County Conservation District had a great year for environmental education in 2022. Starting in March and running through November, we engaged in 43 educational programs and events which reached 2,951 participants. (This number does not include the workshops which are part of our delegated duties from the PA Dept. of Environmental Protection or from the State Conservation Commission.) The year included the most number of programs we have held since 2018, and we reached more than twice that year's number of participants. Of the 43 programs and events which we participated in or led, 30 of them occurred at the Conservation District's Environmental Center. The other 13 programs consisted of one virtual presentation and 12 traveling programs and/or displays.



Cub Scouts enjoyed learning about stream erosion and sedimentation at Destination: High Seas! Day Camp.

In late August, our Mobile Education Center (MEC) had its one-year anniversary at the Big Knob Fair. Over the course of its first year in service, the MEC provided hands-on educational displays to over 2,000 visitors at events around Beaver County and it even made a trip to Fayette County for a multi-Conservation District/multi-organization event!

Our social media outreach also grew in 2022. Our Facebook page gained just over 600 new followers but reached many more people through post sharing. We added several videos to our YouTube channel as well, including three videos on agricultural topics, a spotted lanternfly video, and the first of a series of trail camera videos from our wetlands.



Above: We posted our first trail camera compilation to YouTube in December!



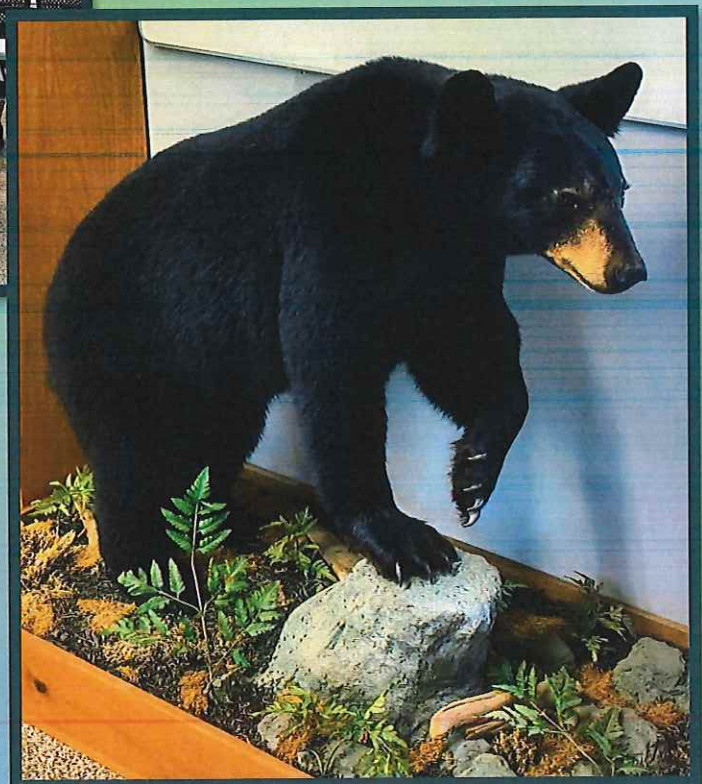
Left: Our Mobile Education Center was on display at both the Hookstown Fair and the Big Knob Fair, as well as several other events.

In between providing educational opportunities, our classroom received some much needed changes. Just before our fall fieldtrip season, the old tile flooring was stripped and a new floor was installed. The old tiles had been chipped and cracked and starting to become a safety concern. The new floor is solid but textured, offering some extra slip-protection to students after they spend time exploring stream ecology in Raccoon Creek.

During the floor replacement, all of the displays, furniture, and equipment had to be removed from the classroom, and when it came time to reinstall it, we took the opportunity to rearrange the displays and update some of them as well. We added a new display case dedicated to the geology and paleo-history of western Pennsylvania. Our forestry section is now comingled with our wildlife mounts. And our touch table is set up in the alcove at the front of the classroom where students also have a view of birdfeeders outside of the windows.

The final 2022 addition to our classroom was a beautiful, full-body mount of a black bear, donated to us by a local hunter, Keith Cunningham. It has quickly become a favorite of the students and other visitors to our classroom.

This bear, along with the other mounts, pelts, and skulls in our teaching collection, offer students a safe, up-close way to learn about local wildlife which they would typically only get to see from afar or in videos and photos.

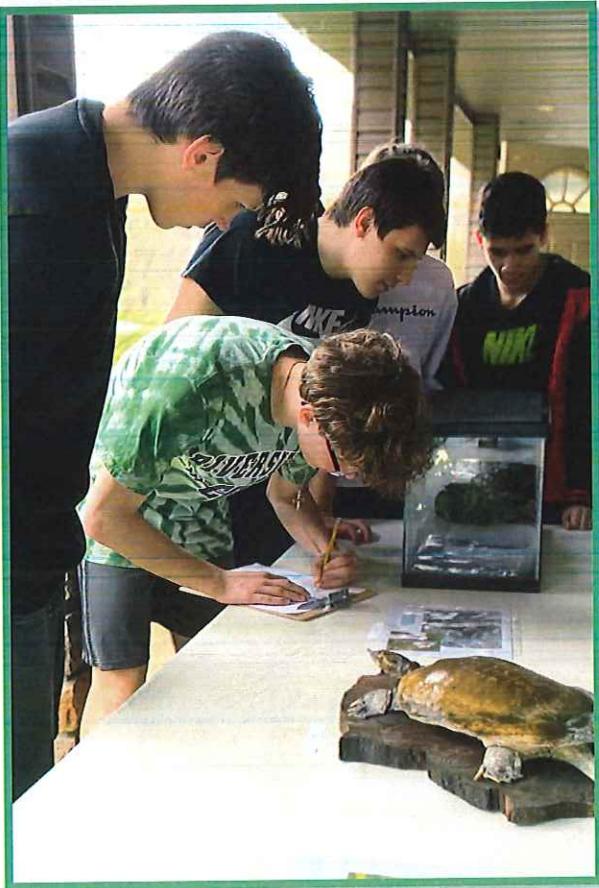


Above Right: *Before photo of our classroom.*

Above Left: *After photo of our classroom.*

Right: *The donated black bear mount from Keith Cunningham.*

Envirothon and Junior Envirothon



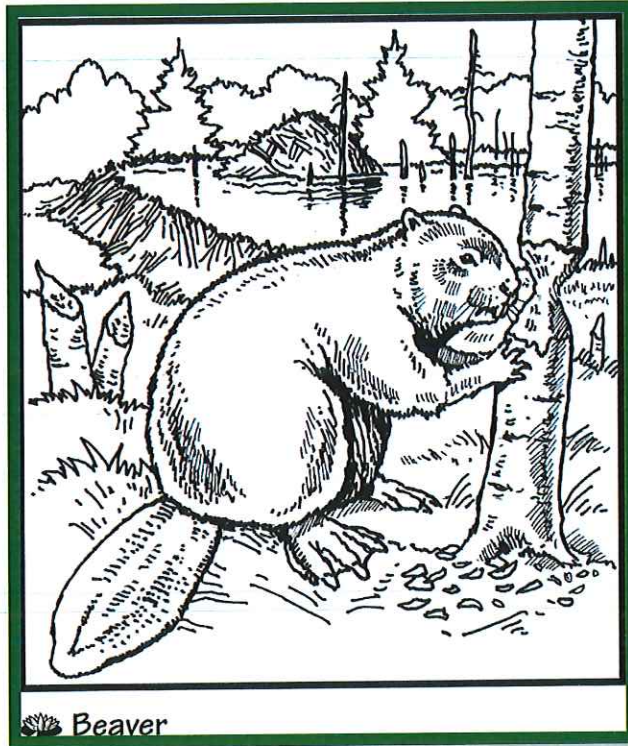
In April 2022, Envirothon returned to in-person competition at Bradys Run Park after two years of disruption by Covid. Participation in the high school division included teams from New Brighton, Riverside, and Central Valley. Junior Envirothon participants included only Riverside teams. Several other school districts showed interest in competing, but unfortunately, the competition date fell during their Easter holiday/spring break period. Overall, 68 participants competed in the 2022 Envirothon and Junior Envirothon combined.

Riverside won both the high school division of Envirothon and the Junior Envirothon. The high school team went on to compete in the state competition at Camp Mount Luther in Mifflinburg, PA.



S
C
H
O
O
L

P
R
O
G
R
A
M
S



Beaver

2022 Coloring Contest
"Beaver"

248 - 1st Grade Entries
335 - 2nd Grade Entries
273 - 3rd Grade Entries

863 Total Participants

In 2022, participation in the Birth of a Tomato program included nine schools with 671 third grade students growing cherry tomato seeds in their classrooms.



Participation in the Birth of a Tree program included six schools with 150 fourth graders growing white pines from seeds.



New Staff Member Joins the Team

January 2022

My name is Rachel Galloway. I joined the Beaver County Conservation District as Resource Conservationist in January of 2022. In this role I review construction plans, permit applications, and conducting site inspections of earthmoving activities to ensure compliance with environmental regulations. My role covers both the Chapter 102 and Chapter 105 programs provided at the District. I am a current Beaver County resident and grew up in the area. In 2018, I graduated from Slippery Rock University of Pennsylvania with a Bachelors of Science degree in Geography with a focus in Environmental Studies and Sustainability. In addition, I earned a certification in Geographic Information Science.

When I am not at work, I enjoy reading, hiking, gardening, and spending time with my dogs and husband.

*Welcome to
the team,
Rachel!*



2022 Grounds Report

In 2022, District staff and volunteers maintained the grounds at the Environmental Center. Gateway Rehab provided manpower for various projects. Two Eagle Scout projects improved the grounds for people and wildlife. Five new picnic tables and 10 new wood duck boxes are on the Environmental Center grounds thanks to Eagle Scouts. Invasive plant management continued with an integrated pest management approach. There are now reduced amounts of Japanese knotweed, multiflora rose, and other invasive non-native plants fouling the trails and forests of the District Environmental Center. Bluebird boxes and other nesting structures were maintained to improve nesting opportunities for native birds. New trails were constructed. Significant improvements were made to the trail at the wetland outlet with support from the Beaver Valley Contractors and Supplies Association. The Beaver County Dept. of Public Works framed out four new kiosks. Next year these kiosks will hold a variety of educational panels.

The Environmental Center grounds are open for the public to enjoy. Birders, dog walkers, wildflower watchers, horseback riders and many others enjoy the grounds.



Above: These four well camouflaged eggs are from one of our most visible and noisy nesting birds. The killdeer nests on gravel and stone areas where its eggs are almost invisible, but the adult makes quite a commotion to draw your attention away from the nest and young.

Below: This bridge replaced the old crossing at the wetland outlet significantly improving trail access.



2022 Tree Sale!

BCCD's 2022 Annual Tree Sale was an overall success. We had 80 orders total. We would like to thank our volunteers that helped put orders together and the volunteers that helped the day of the tree sale. We would also like to thank Beaver County Department of Sustainability and Waste Management for the compost.

What Did We Sell?

1,140 Trees
29 Wildflower Seed Mix Pouches
125 Shrubs
83 Fruit Trees
A lot of compost!



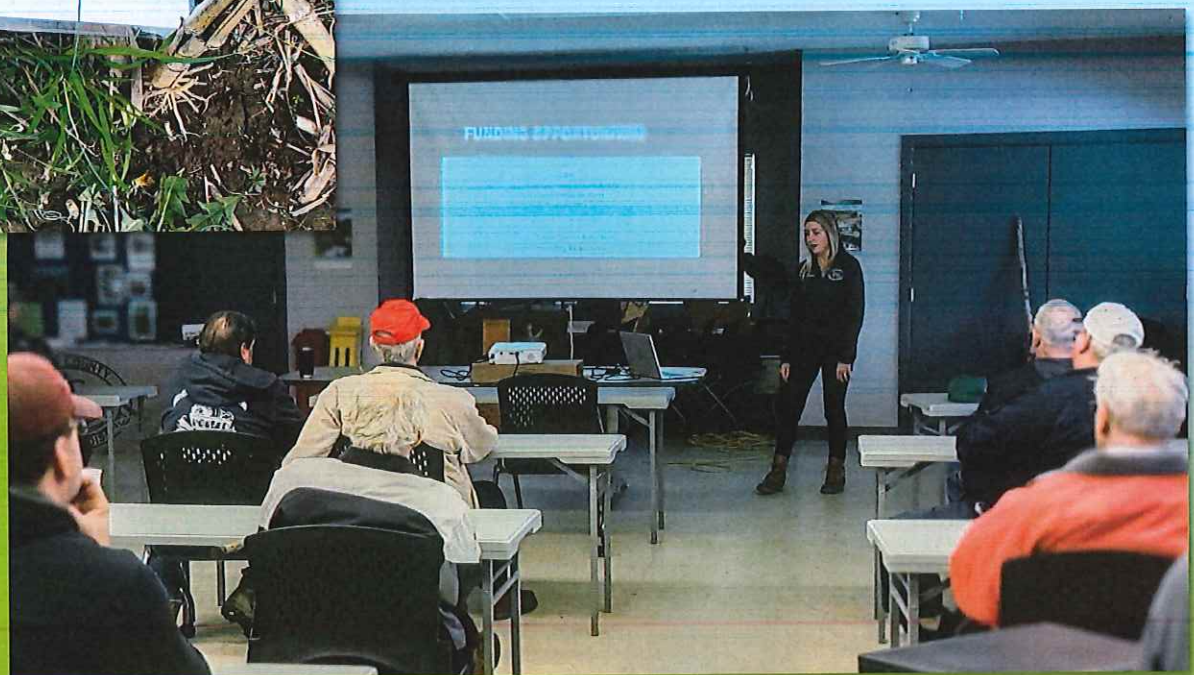
*Thanks again to
all who helped
make this event
a success!*

What Have We Done?

Workshops, Outreach, and Other Events:



Agricultural workshops and field days offer education on state regulations and requirements as well as presentations tailored to the needs and experiences of Beaver County farmers.





Our Stormwater Help for Homeowners workshop was a big success, hosting 41 participants who learned about water quality, nonpoint source pollution, watersheds, and Best Management Practices for dealing with stormwater. Each attending household received a rain barrel kit and instructions on how to assemble it.



Chapter 105 and PASPGP-6:



What Changed and What Stayed the Same

Our Conservation District staff joined with those from Allegheny, Butler, and Washington Counties as well as the DEP Southwest Regional Office to present a virtual workshop on Chapters 102 and 105 for developers and contractors.

Form Updates and What has not Changed:

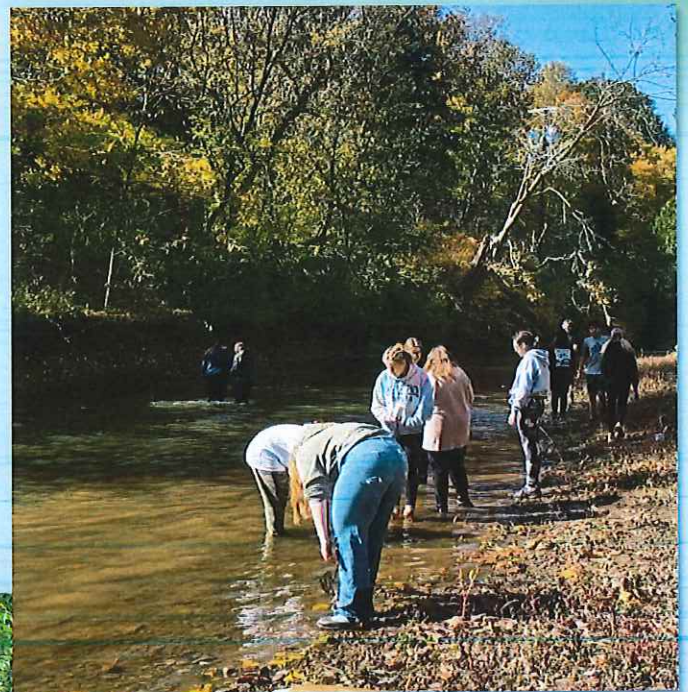
- The Aquatic Resource Impact Table was revised in July (6/2021). The new version includes columns to distinguish between DEP impact types and ACOE impact types.
- Issuance documents no longer include the self-certification form for non-reporting projects.
- Finalized PNDI search receipts or correspondence letters with jurisdictional agencies need to be included for an application to be complete. PNDI search results are considered expired after two years. Search results should be updated if they are set to expire during review/before work begins.

Those who review permits and inspect construction sites need training too! Annual training for District and DEP staff in the CHP 102 and 105 programs is a great time to network with other technicians from all across Pennsylvania and to see examples of best management practices done right which might not be so common in our own part of the state.





Although most of the students who enjoy the District's youth education programs are elementary school age, many teenagers also love participating in environmental learning activities. Fieldtrips, Envirothon, and Scouting often lead to a life-long love of nature and set students on the road to amazing environmental careers!





Updates to the MEC included new interior paint, roof vents, LED lighting, and a Velcro wall. These changes debuted at Hookstown and Big Knob Fairs.



Along with the donated black bear from Keith Cunningham and the installation of the new floor, the classroom also received a new glass display case for geology education and a wooden cabinet for our smaller bird mounts.



A new footbridge was built over the outflow of our wetlands thanks to volunteers from the Beaver Valley Contractors and Suppliers Association, District Board members, and our staff.



District Board members and staff conducted two highway cleanups along Route 151 in 2022 through PennDOT's Adopt-A-Highway program.



2022 Editor's Note:

Thank you to the Beaver County Conservation District's Board of Directors, the Beaver County Commissioners, and the partnership agencies whose support helped our staff make 2022 a success! We greatly appreciated all of the hard work you put in which allows us to do our jobs serving the natural resource needs of Beaver County. We also thank the sponsors and private organizations who have partnered with us on projects and programs which go above and beyond the everyday duties of our staff and give us the opportunity to provide outreach, education, and technical assistance to a much broader audience among our communities and neighbors than we would otherwise reach. We look forward to continuing to work with all of you in the future as we serve Beaver County. The Beaver County Conservation District provides leadership in natural resource management through outreach, education, and technical assistance.



Beaver County Conservation District
Profit & Loss
 January through December 2022

	Jan - Dec 22
Ordinary Income/Expense	
Income	
40000 · Beaver County Budget Revenue	251,215.00
40010 · Taxable Sales Revenue	4,913.98
40020 · Non-Taxable Sales Revenue	9,620.05
40030 · E&S Plan Fees Revenue	59,860.00
40040 · NPDES Permit Fees Revenue	14,500.00
40050 · Chapter 102 Interest Income	40.00
40060 · 105 General Permit Fees Revenue	11,575.00
40070 · Chapter 105 Interest Income	51.65
40080 · Dirt & Gravel Road Revenue	158,589.27
40090 · D & G Program - Interest Income	504.39
40100 · Low Volume Road Revenue	76,385.11
40110 · LVR Program - Interest Income	415.35
40120 · Farm Equipment Rental Income	1,491.00
40130 · Grant Revenue	124,806.25
40140 · Misc. Revenue	19,745.98
40150 · Donations Revenue	4,747.36
40170 · CDFAP Revenue	113,828.94
40190 · UGWF Revenue	67,123.03
40200 · General Acct - Interest Income	365.60
40210 · Payroll - Interest Income	95.12
40230 · Savings - Interest revenue	1,043.12
40240 · CD - Interest income	119.18
	921,035.38
Total Income	921,035.38
Cost of Goods Sold	
5555 · Cost of Goods Sold	0.00
	0.00
Total COGS	0.00
Gross Profit	921,035.38
Expense	
50000 · PAYROLL EXPENSES	
50010 · Wages	361,776.23
50020 · FICA Employer	27,711.92
50030 · SUTA Employer	1,094.11
50050 · Health Insurance	37,323.82
50060 · Sick/Acc/Disab/Life Insurance	4,254.52
50070 · 457B Base Employer Fees	1,078.00
50080 · Payroll Processing Fee	240.00
50000 · PAYROLL EXPENSES - Other	2,395.13
	435,873.73
Total 50000 · PAYROLL EXPENSES	435,873.73
50100 · BUILDINGS AND GROUNDS	
50120 · Gas & Electric	9,987.66
50130 · Sewage/Refuse	5,424.84
50140 · Security	738.00
50150 · Repairs & Maint	17,291.01
50160 · Telephone	8,086.92
	41,528.43
Total 50100 · BUILDINGS AND GROUNDS	41,528.43
50200 · VEHICLE EXPENSES	
50210 · Vehicle Maintenance	4,591.50
50220 · Fuel	6,095.47
	10,686.97
Total 50200 · VEHICLE EXPENSES	10,686.97
50300 · Liability Insurance	28,172.00
50400 · PROFESSIONAL SERVICES	
50410 · IT SERVICES	
50411 · Computer Equip. Maintenance	6,953.28
50412 · Copier Equip. Maintenance	1,558.92
50415 · Consulting	178.08
	8,690.28

7:41 AM
01/05/23
Cash Basis

Beaver County Conservation District
Profit & Loss
January through December 2022

	Jan - Dec 22
Total 50410 · IT SERVICES	8,690.28
50430 · Accountant	5,600.00
50440 · Legal Fees/Mentoring	5,000.00
Total 50400 · PROFESSIONAL SERVICES	19,290.28
50500 · PROGRAM EXPENSES	
50510 · TREE SALE	
50511 · Tree Sale Expenses	4,359.11
Total 50510 · TREE SALE	4,359.11
50520 · D & G & LOW VOLUME RD PROJECTS	
50521 · Dirt & Gravel Road Expenses	149,661.19
50522 · Low Volume Road Expenses	93,591.47
Total 50520 · D & G & LOW VOLUME RD PROJECTS	243,252.66
50550 · ENVIRONMENTAL EDUCATION	
50552 · Envirothon	4,030.49
50550 · ENVIRONMENTAL EDUCATION - Other	325.00
Total 50550 · ENVIRONMENTAL EDUCATION	4,355.49
50560 · WEST NILE VIRUS EXPENSES	
50561 · West Nile Virus	12,842.16
Total 50560 · WEST NILE VIRUS EXPENSES	12,842.16
50570 · OTHER PROGRAMS	
50572 · Misc. Program Expense	1,667.70
Total 50570 · OTHER PROGRAMS	1,667.70
50580 · CHAPTER 102	7,124.75
50590 · CHAPTER 105	1,141.47
Total 50500 · PROGRAM EXPENSES	274,743.34
50700 · OPERATING EXPENSES	
50710 · OFFICE OPERATIONS	
50712 · Equipment	1,697.97
50713 · Postage & Shipping	776.77
50714 · Dues, Memberships, Donations	4,014.00
50715 · Advertising	3,542.00
50716 · Supplies	4,000.80
50717 · Subscriptions	729.46
50719 · Misc. Operating Expenses	2,408.84
50720 · Credit Card and Processing fees	37.91
Total 50710 · OFFICE OPERATIONS	17,207.75
50740 · DIRECTORS AND STAFF EXPENSE	
50741 · Directors Expense	356.86
50743 · Training, Seminars, & Confs.	1,254.80
50744 · Board Meetings	315.92
Total 50740 · DIRECTORS AND STAFF EXPENSE	1,927.58
50750 · MAINTENANCE	
50751 · Equipment Maintenance	368.16
Total 50750 · MAINTENANCE	368.16
50760 · OTHER OPERATING EXPENSES	
50762 · Food	1,132.50
Total 50760 · OTHER OPERATING EXPENSES	1,132.50
Total 50700 · OPERATING EXPENSES	20,635.99

7:41 AM
01/05/23
Cash Basis

Beaver County Conservation District
Profit & Loss
January through December 2022

	<u>Jan - Dec 22</u>
50800 · Uncategorized Expenses	322.80
50900 · GRANTS	
50904 · NPS Mini Grant - AG Workshops	328.60
50903 · American Recovery Act (ARP)	62,771.55
50902 · Spotted Lanternfly Grant	1,016.96
50901 · NPS Mini Grant - Rain Barrel	1,524.37
50920 · GROWING GREENER GRANTS	
50921 · Watershed Specialist	894.90
50922 · Raccoon Creek Streambank Proje.	22,650.00
50920 · GROWING GREENER GRANTS - Other	2,964.50
Total 50920 · GROWING GREENER GRANTS	<u>26,509.40</u>
Total 50900 · GRANTS	<u>92,150.88</u>
Total Expense	<u>923,404.42</u>
Net Ordinary Income	-2,369.04
Other Income/Expense	
Other Income	
81000 · Other Revenue	5.67
Total Other Income	<u>5.67</u>
Net Other Income	<u>5.67</u>
Net Income	<u><u>-2,363.37</u></u>

Beaver County Conservation District

156 Cowpath Road
Aliquippa, PA 15001

www.beavercountyconservationdistrict.org

www.facebook.com/beavercountyconservationdistrict



*Thanks for
another
wonderful
year!*

