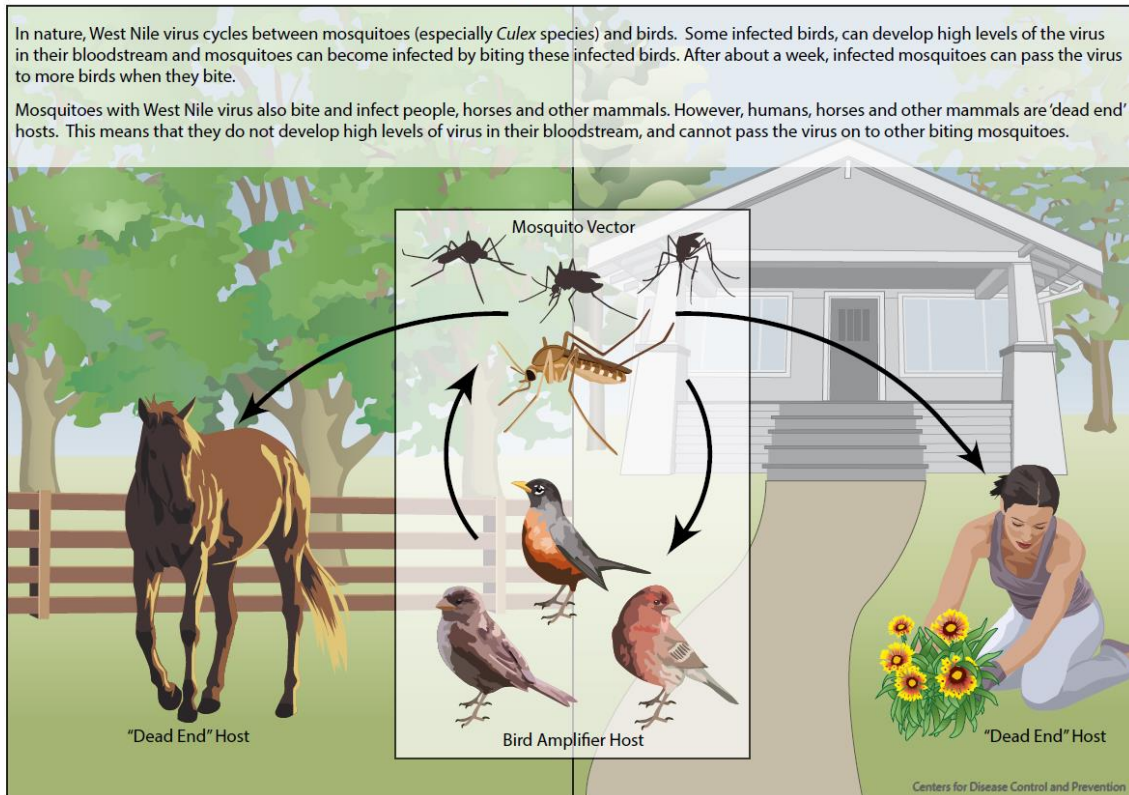


# West Nile Virus

## West Nile Virus Transmission Cycle



West Nile Virus is a virus transmitted from infected birds to mosquitoes when a mosquito bites an infected bird. It is then transmitted to humans when the infected female mosquito bites the human and takes a bloodmeal. Female mosquitoes must take a bloodmeal to lay their eggs. Humans are considered an incidental infection or dead-end host, which means we cannot pass the virus on to other biting mosquitoes and continue the transmission cycle.

Most people infected with West Nile virus will either have no symptoms or mild flu like symptoms with fever, aches, headache, and fatigue with recovery in a few days.

A small percentage, 1 in 150 people, can develop more serious conditions that can lead to encephalitis with symptoms such as tremors, convulsions, paralysis and even death.

There is no treatment or vaccine for humans.

If you have concerns that you may have West Nile virus, consult your health care provider.

For more information on mosquitoes and West Nile virus, visit our website.

[www.beavercountyconservationdistrict.org](http://www.beavercountyconservationdistrict.org)

Or give us a call 724-378-1701 ext. 222.

