

Wetland Inhabitant Word Search

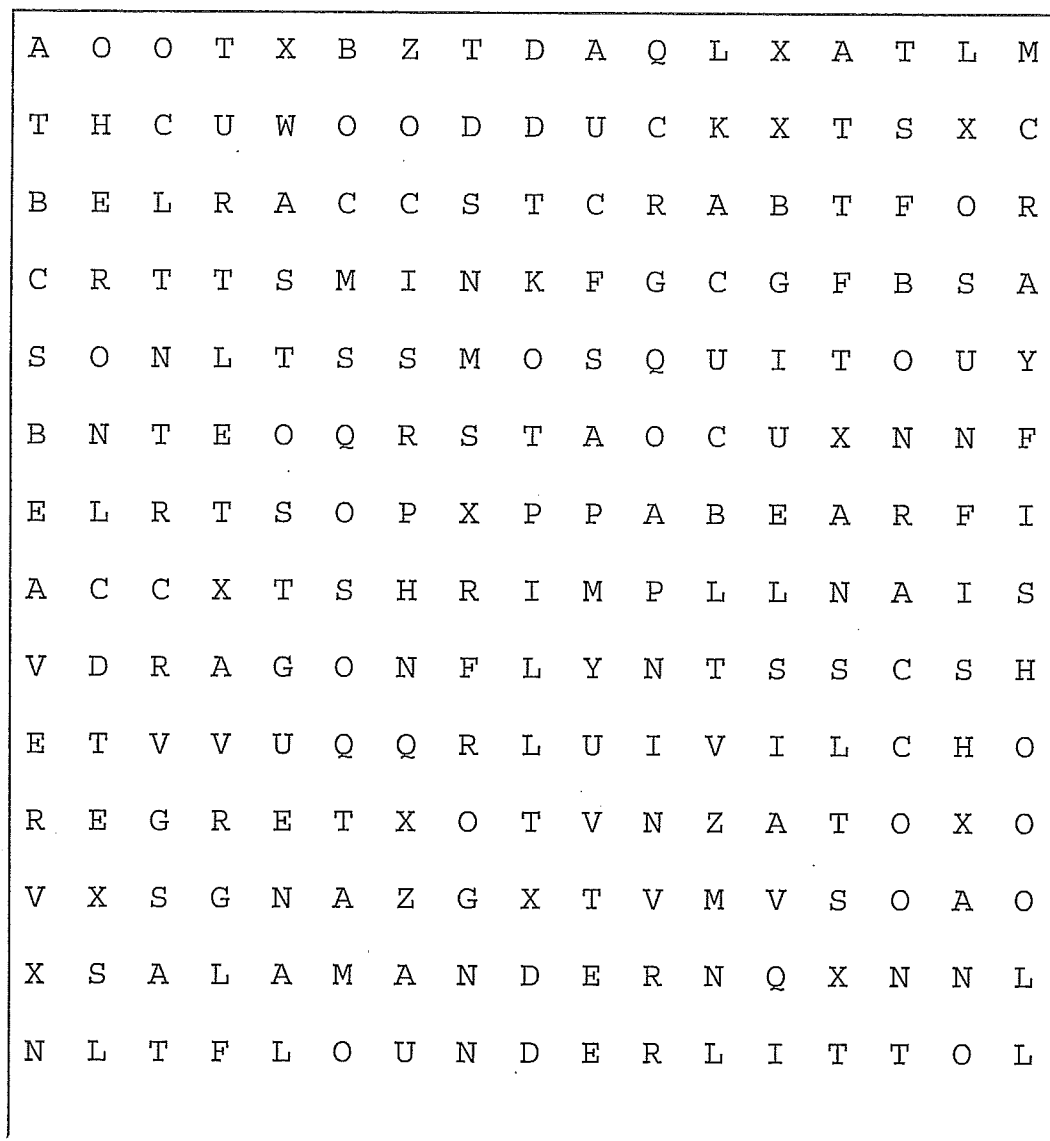
Search for the types of animals found in wetlands. See if you can find:

beaver flounder wood duck clam crab

crayfish mosquito raccoon heron bear

frog egret dragonfly sunfish mink

turtle shrimp salamander



AQUATIC MACROINVERTEBRATE WORD FIND



Why are aquatic macroinvertebrates important in determining water health?
Find all the macroinvertebrate words in the puzzle and string together the remaining letters to answer the question.

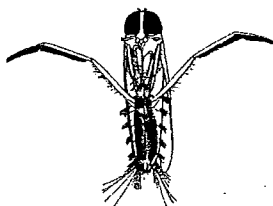
E	L	T	E	E	B	G	I	G	I	L	R	I	H	W
F	C	A	D	D	I	S	F	L	Y	W	E	I	A	N
N	I	A	E	L	F	R	E	T	A	W	D	T	R	A
P	I	S	M	O	S	Q	U	I	O	R	M	L	E	M
H	A	T	H	R	E	A	D	W	O	R	Q	F	I	A
A	Y	T	E	I	W	A	R	C	S	R	A	L	R	O
N	I	T	F	E	N	A	R	O	N	F	L	E	T	B
T	Y	A	D	R	A	R	O	S	E	V	L	I	S	R
O	D	O	P	D	L	R	S	C	P	O	F	P	D	R
M	S	P	R	I	N	G	T	A	I	L	O	L	E	T
I	S	T	O	N	E	F	L	Y	L	D	L	O	T	A
D	U	N	W	A	T	E	R	M	I	T	E	S	A	W
G	R	E	M	L	E	S	M	A	D	I	O	N	O	O

BACKSWIMMER
CADDISFLY
COPEPOD
CRANEFLY
DAMSELFLY

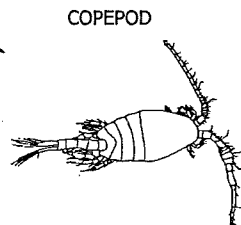
DRAGONFLY
FISHINGSPIDER
MOSQUITO
PHANTOMMIDGE
SOLDIERFLY

SPRINGTAIL
STONEFLY
THREADWORM
WATERBOATMAN
WATERFLEA

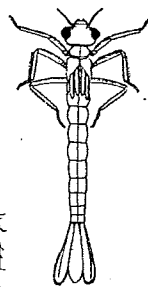
WATERMITE
WATERSCORPION
WATERSTRIDER
WHIRLIGIGBEETLE



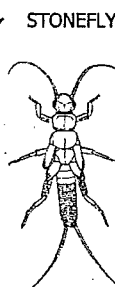
BACKSWIMMER



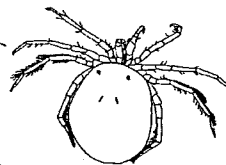
COPEPOD



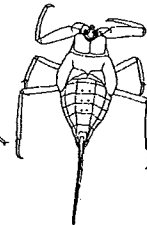
DAMSELFLY



STONEFLY



WATERMITE



WATERSCORPION